

VF 27□...BN27□

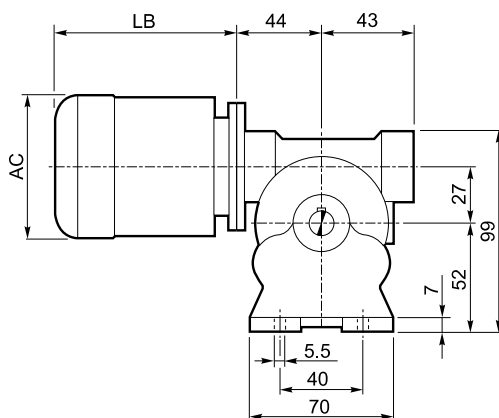
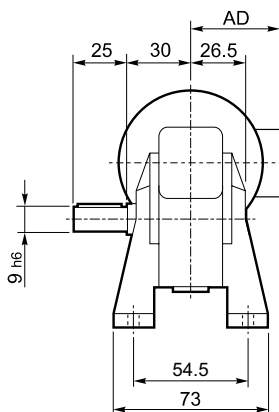
24 - DIMENSIONI

24 - DIMENSIONS

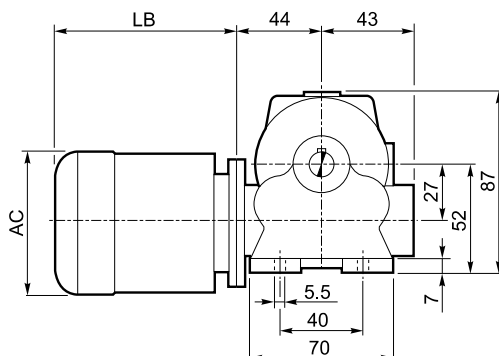
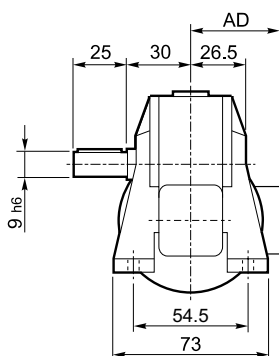
24 - ABMESSUNGEN

24 - DIMENSIONS

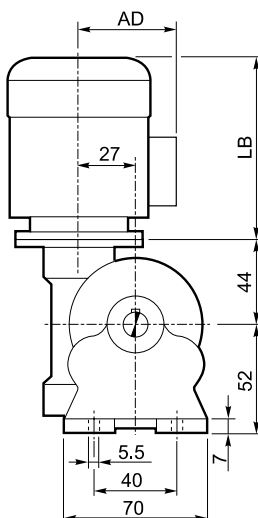
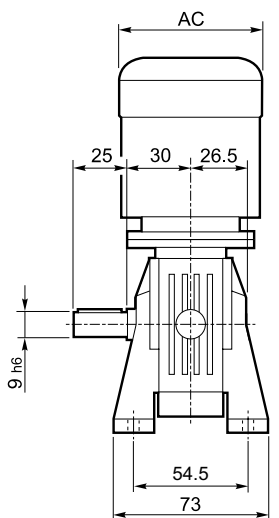
A



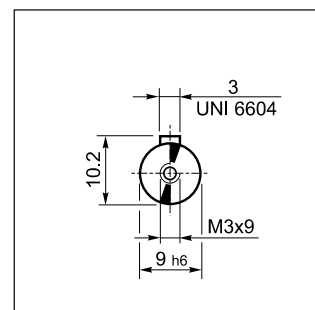
N



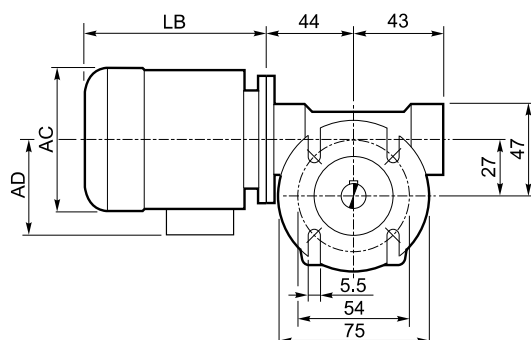
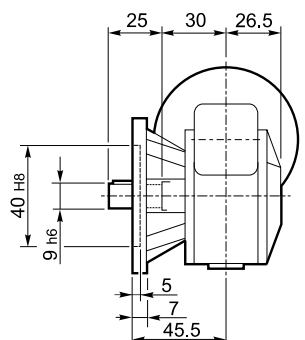
V

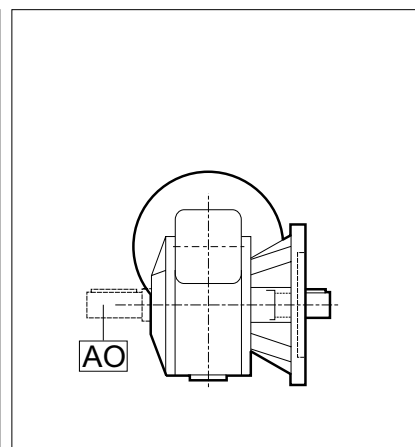
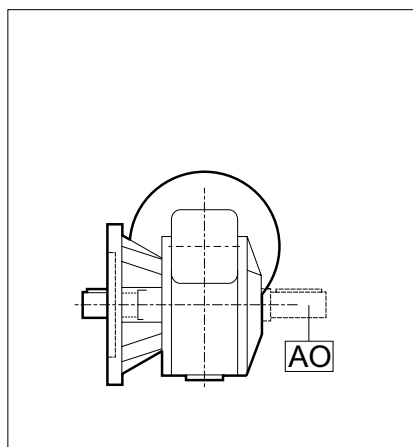
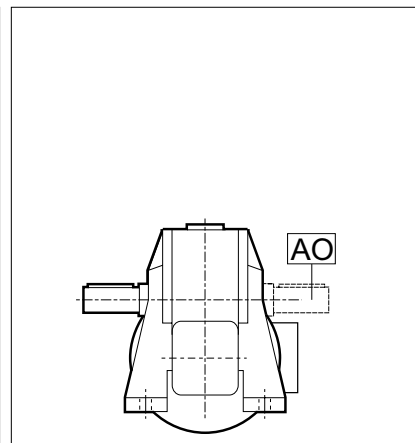
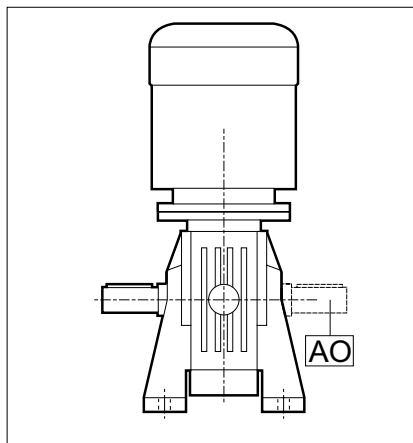
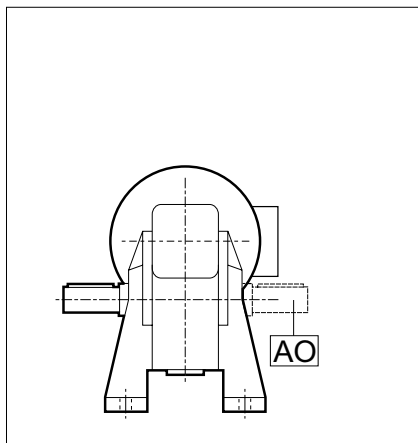
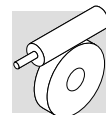


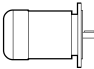

OUTPUT

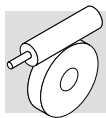


F



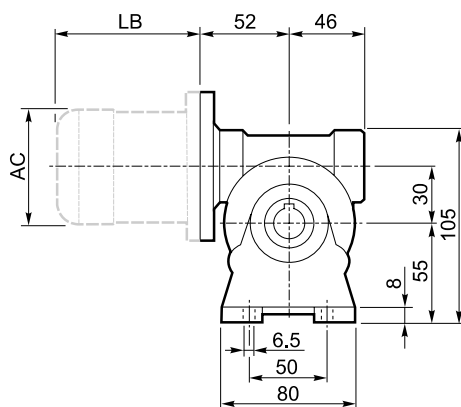
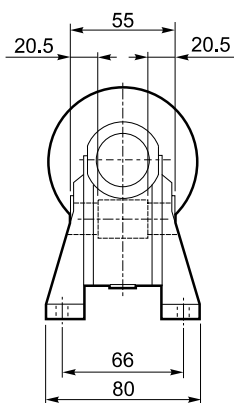


	VF 27													
	P_n	n	M_n	η	cosφ	I_n	I_s	M_s	M_a	J_m		LB	AC	AD
	kW	min⁻¹	Nm	%		A (400V)	I_n	M_n	M_n	(· 10⁻⁴) kgm²				
BN 27A4	0.04	1350	0.28	36	0.57	0.28	2.3	2.0	1.8	0.56	2.8	132	103	76
BN 27B4	0.06	1360	0.42	39	0.57	0.39	2.5	2.2	1.9	0.76	3.1	149	103	76
BN 27C4	0.09	1380	0.63	46	0.65	0.43	2.8	2.3	1.9	1.49	3.3	175	112	94

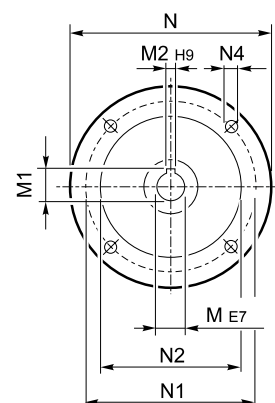
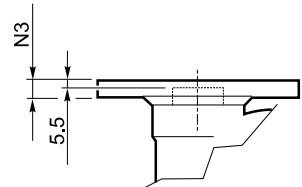


VF 30□...P(IEC)

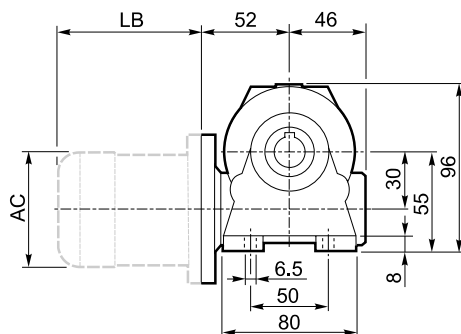
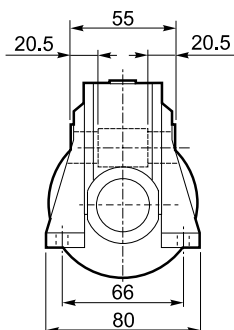
A



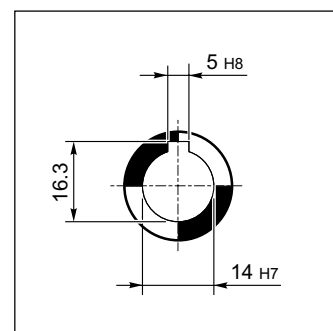
INPUT



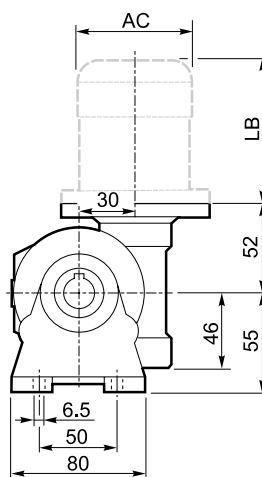
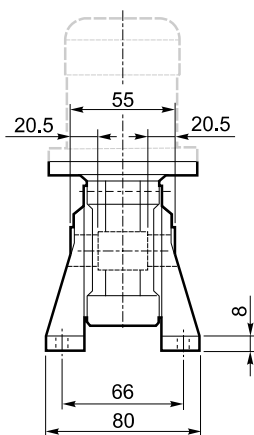
N



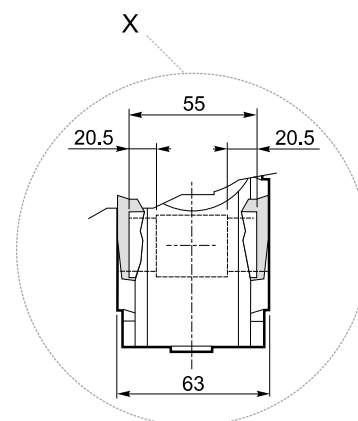
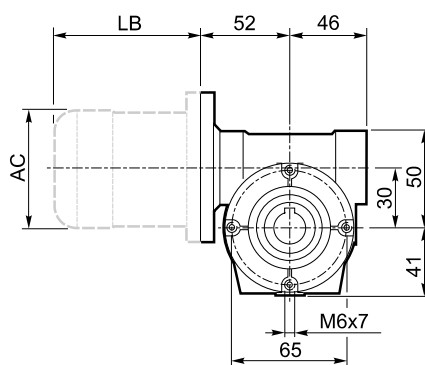
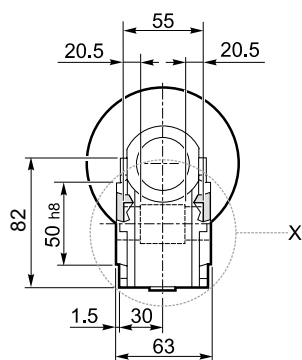
OUTPUT

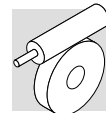


V

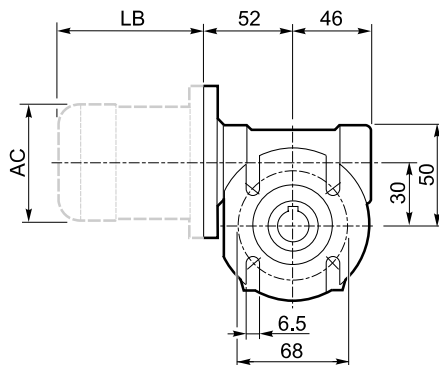
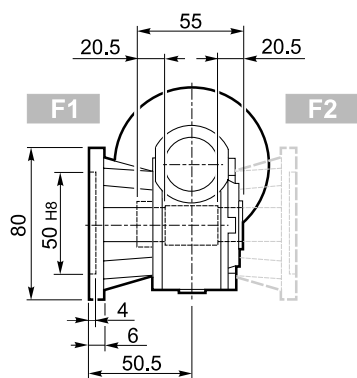


P

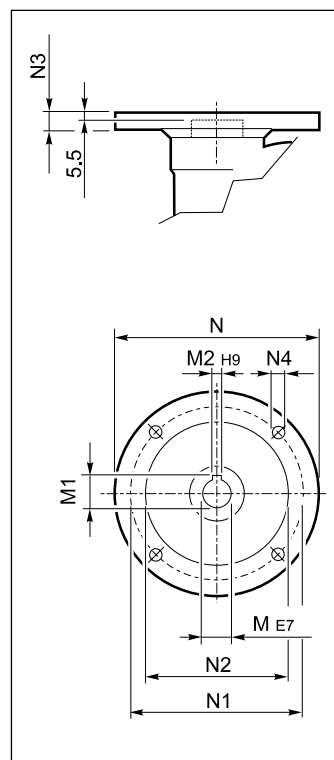




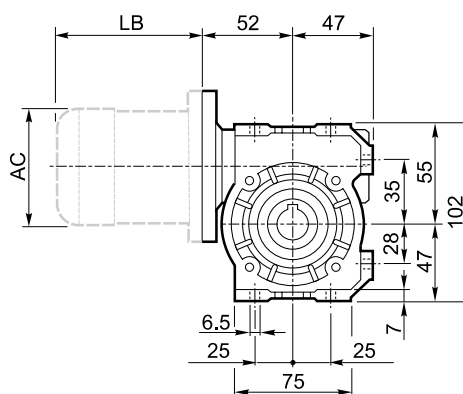
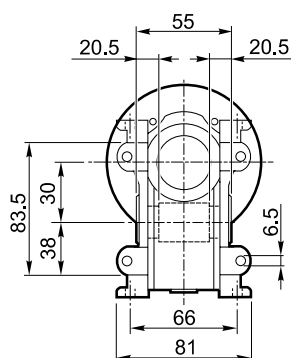
F₋



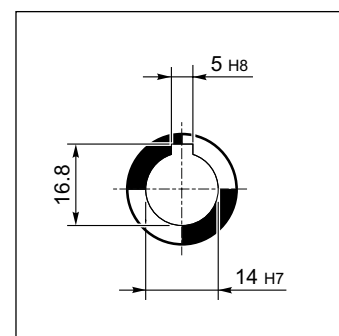
INPUT



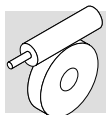
U



OUTPUT

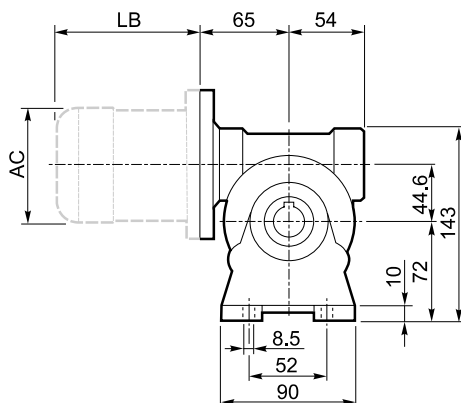
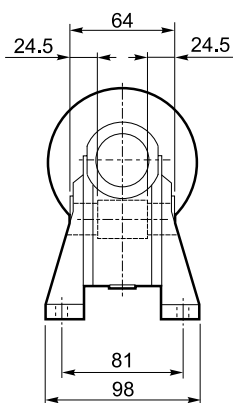


VF 30 ₋												BN		BN...FD BN...FA		K		K...FC	
		M	M1	M2	N	N1	N2	N3	N4			LB	AC	LB	AC	LB	AC	LB	AC
VF 30	P56 B5	9	10.4	3	120	100	80	7	7	1.1	56	165	110	—	—	—	—	—	—
VF 30	P56 B14	9	10.4	3	80	65	50	7	5.5		56	165	110	—	—	—	—	—	—
VF 30	P63 B5	11	12.8	4	140	115	95	8	9.5		63	184	121	249	121	165	122	214	122
VF 30	P63 B14	11	12.8	4	90	75	60	6	5.5		63	184	121	249	121	—	—	—	—

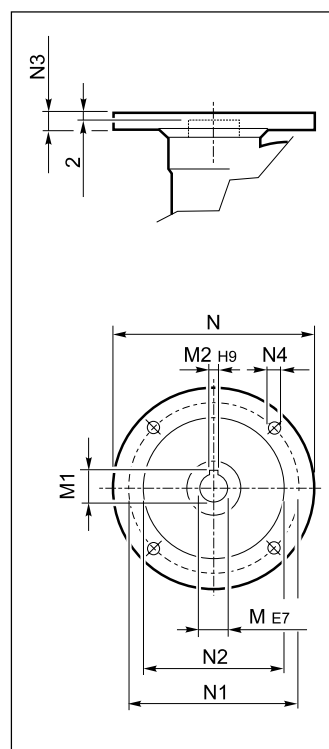


VF 44□...P(IEC)

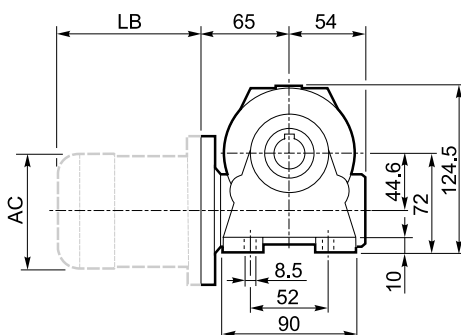
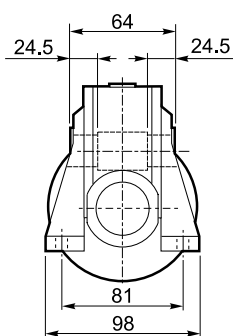
A



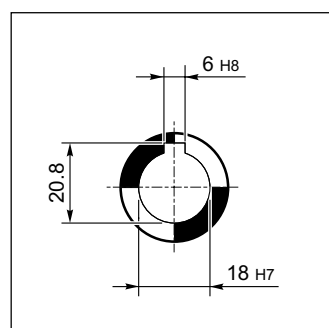
INPUT



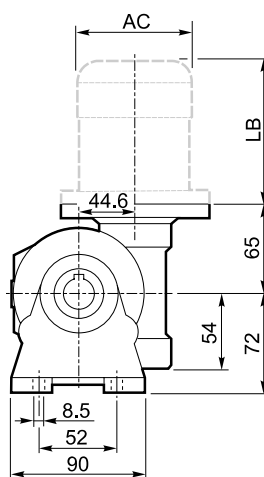
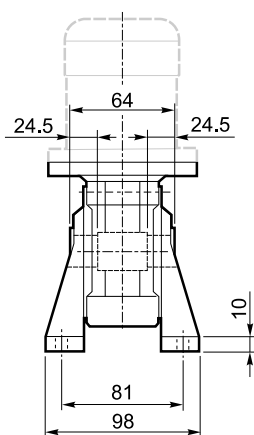
N



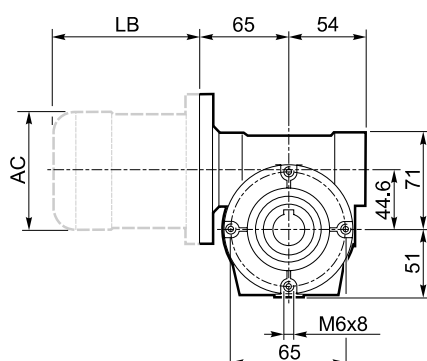
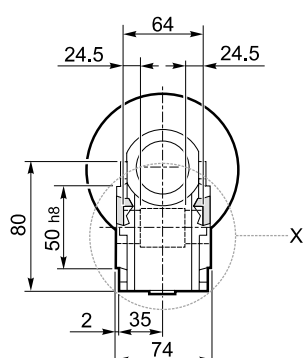
OUTPUT



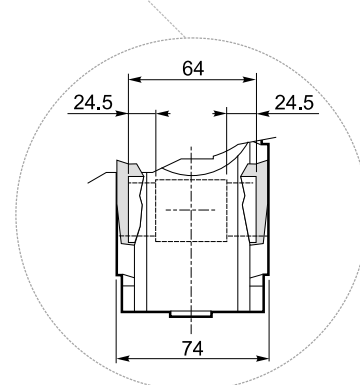
V

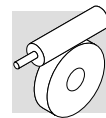
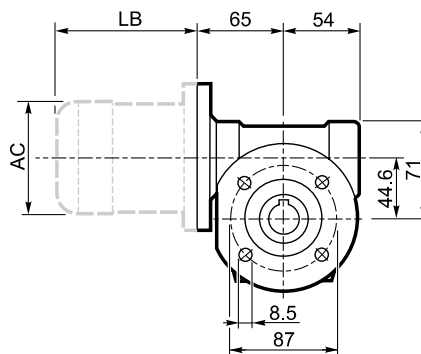
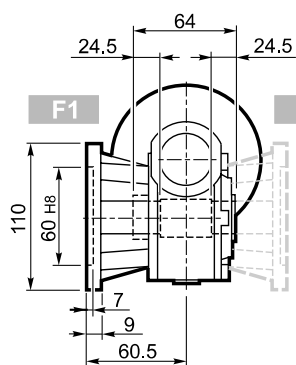
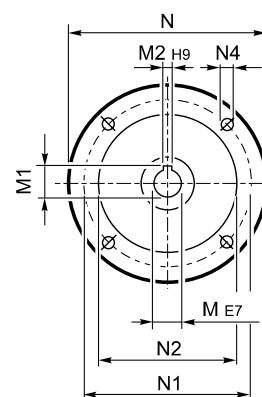
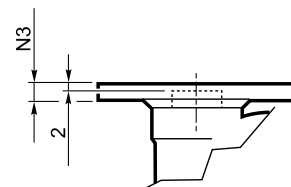
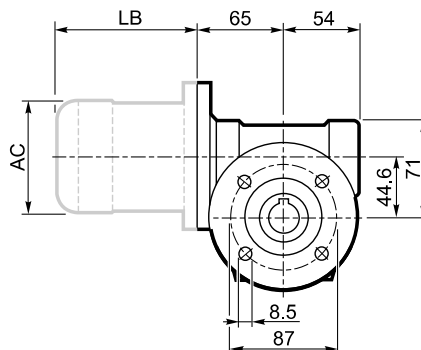
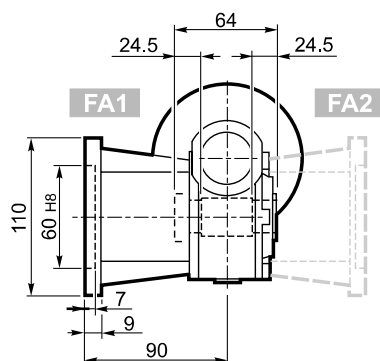
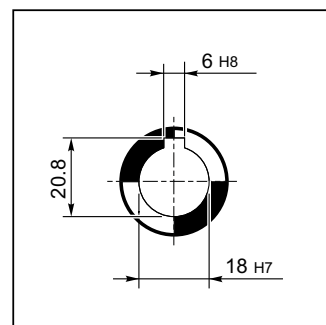
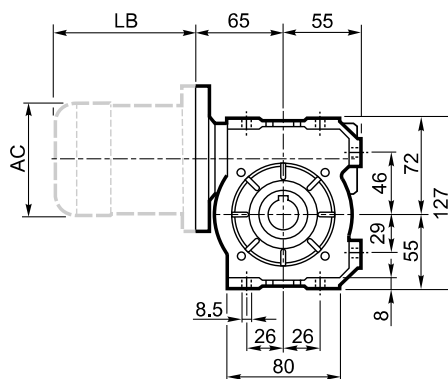
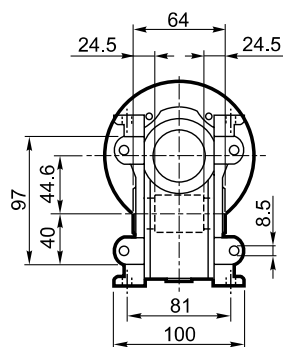


P

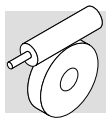


X



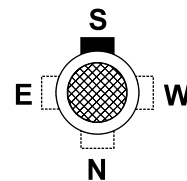
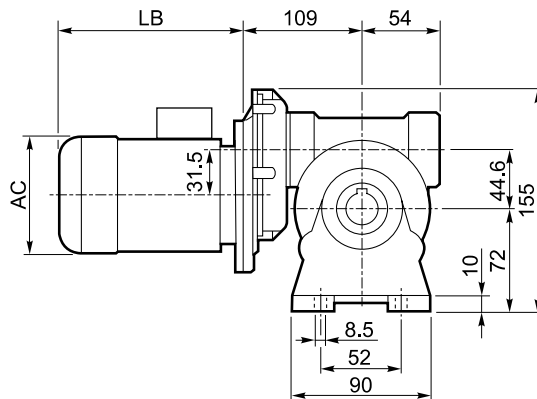
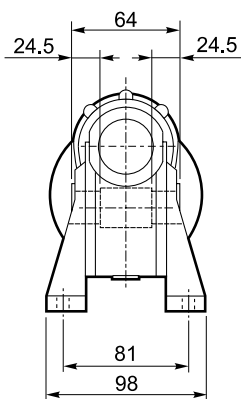
**F₋****INPUT****FA₋****OUTPUT****U**

VF 44 ₋												BN		BN...FD BN...FA		K		K...FC	
		M	M1	M2	N	N1	N2	N3	N4			LB	AC	LB	AC	LB	AC	LB	AC
VF 44	P63 B5	11	12.8	4	140	115	95	10	9.5	2.0	63	184	121	249	121	165	122	214	122
VF 44	P71 B5	14	16.3	5	160	130	110	10	9.5		71	219	138	280	138	186	139	219	139
VF 44	P63 B14	11	12.8	4	90	75	60	8	5.5		63	184	121	249	121	—	—	—	—
VF 44	P71 B14	14	16.3	5	105	85	70	10	7		71	219	138	280	138	—	—	—	—

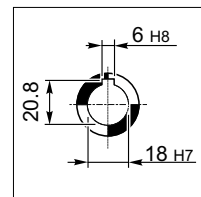


VFR 44□...BN 44□

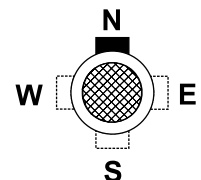
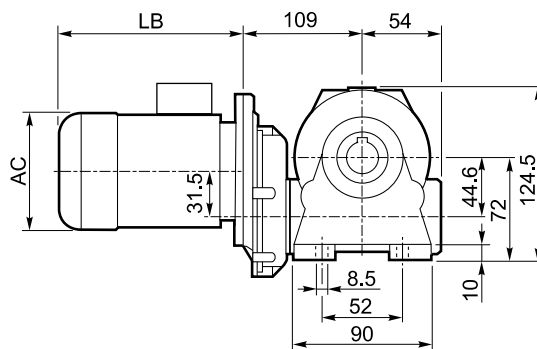
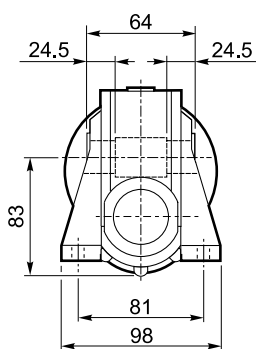
A



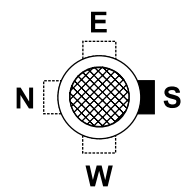
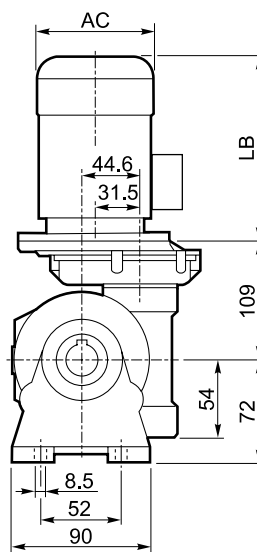
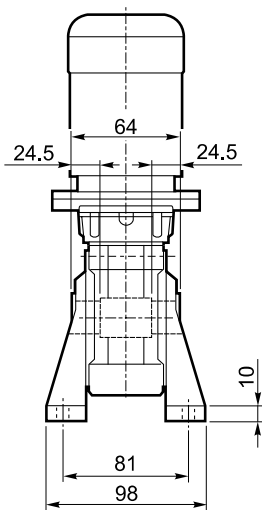
OUTPUT



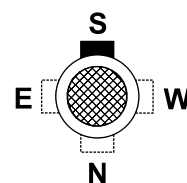
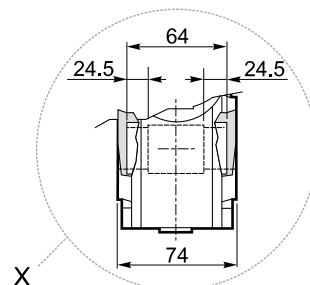
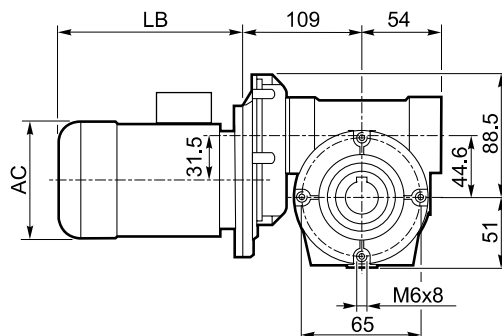
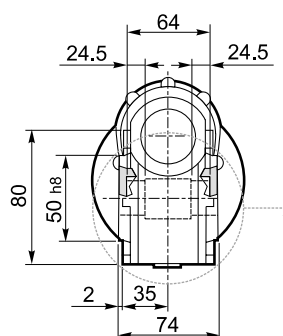
N

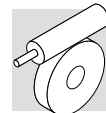


V

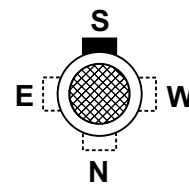
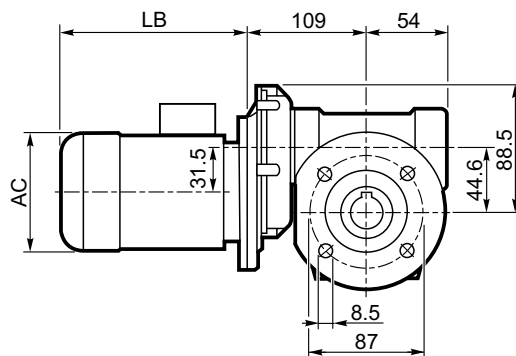
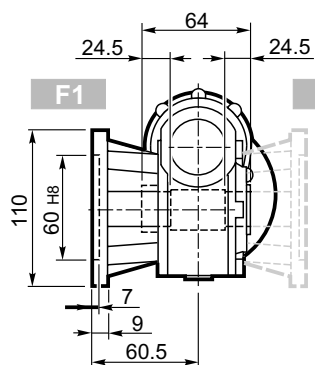


P

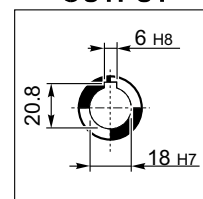




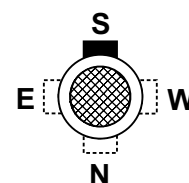
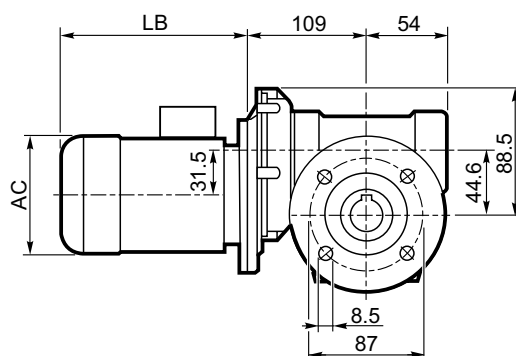
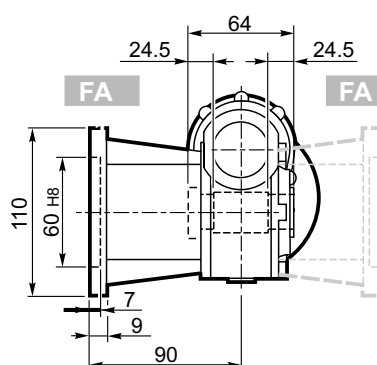
F_



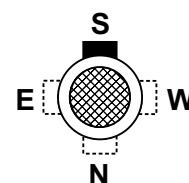
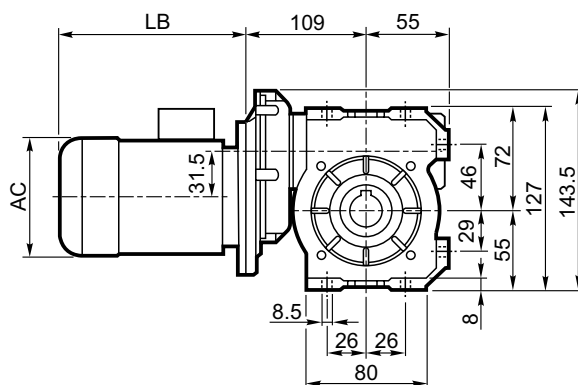
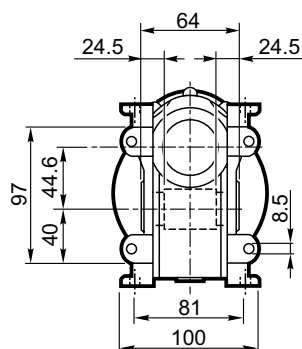
OUTPUT



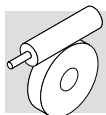
FA_



U

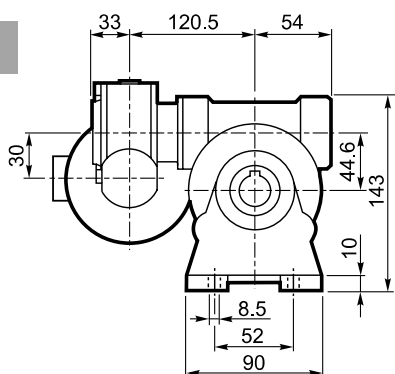


	VFR 44_													
	P _n	n	M _n	η	cos φ	I _n	I _s	M _s	M _a	J _m		LB	AC	AD
	kW	min ⁻¹	Nm	%		A (400V)	In	Mn	Mn	(• 10 ⁻⁴) kgm ²	Kg			
BN 44B4	0.06	1380	0.42	40	0.58	0.38	2.4	2.3	1.9	1.22	4.7	168	112	94
BN 44C4	0.09	1380	0.63	46	0.65	0.43	2.8	2.3	2	1.49	4.6	168	112	94

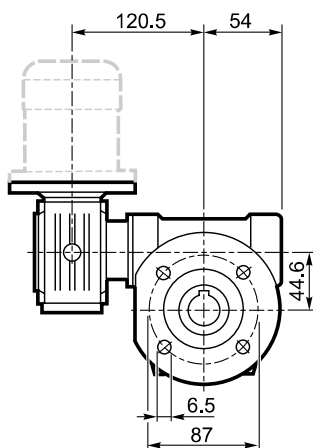


VF/VF 30/44□...P(IEC)

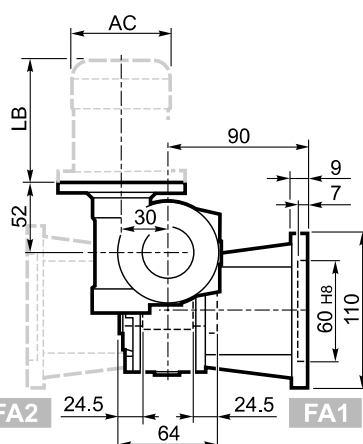
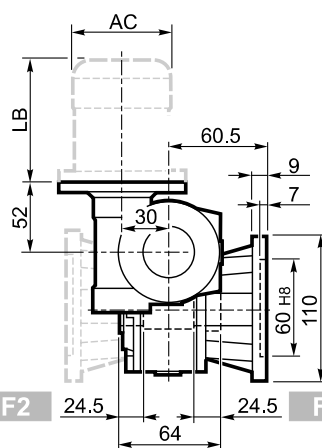
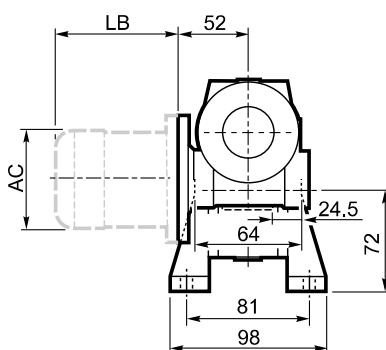
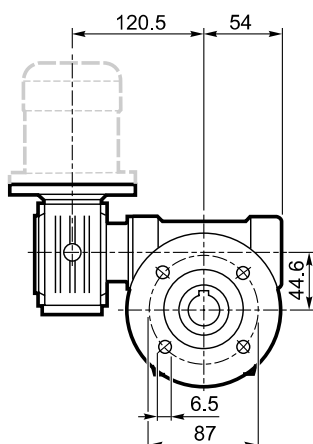
A



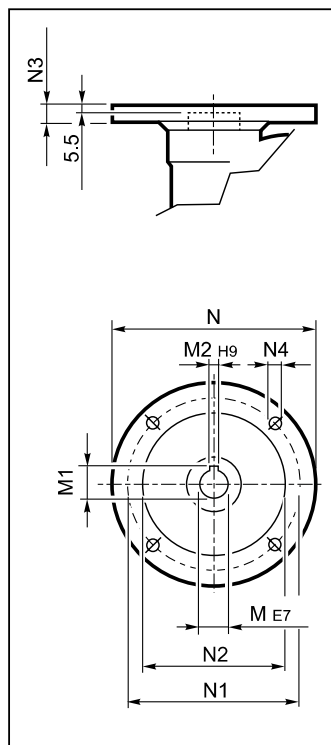
F_



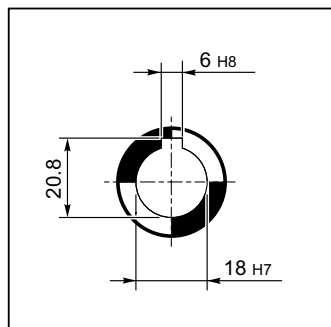
FA_

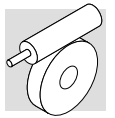


INPUT

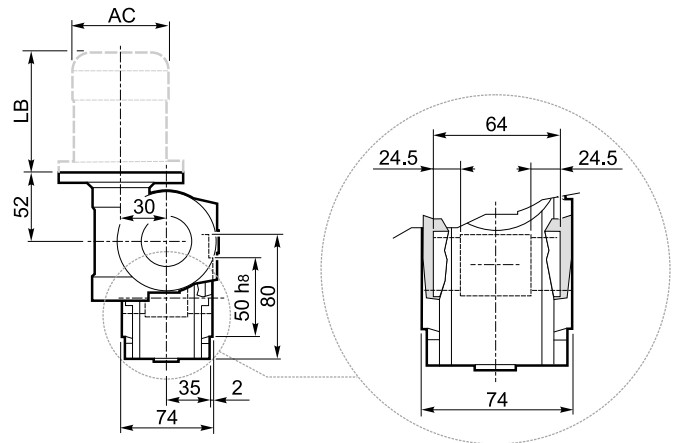
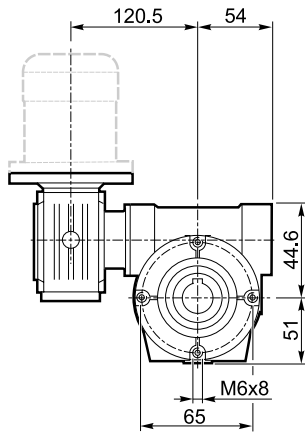


OUTPUT

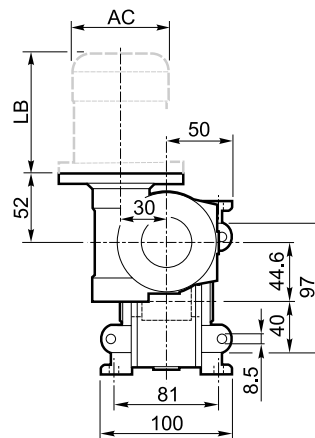
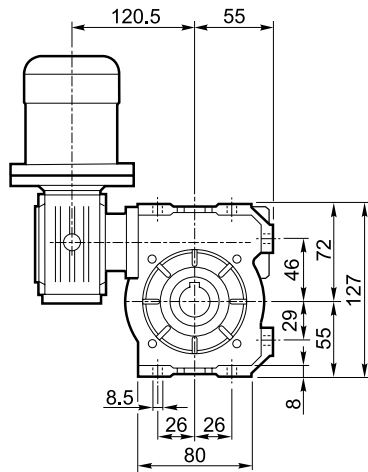








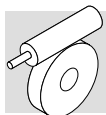
P



U

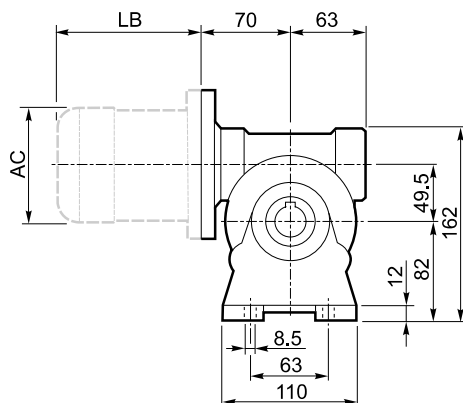
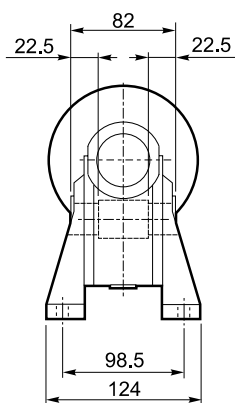


VF/VF 30/44_												BN		BN...FD BN...FA	
		M	M1	M2	N	N1	N2	N3	N4			LB	AC	LB	AC
VF/VF 30/44	P56 B14	9	10.4	3	80	65	50	7	5.5	3.5	BN 56	165	110	—	—
VF/VF 30/44	P63 B14	11	12.8	4	90	75	60	6	5.5		BN 63	184	121	249	121

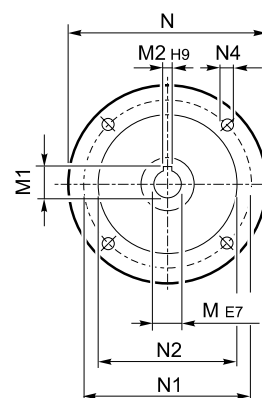
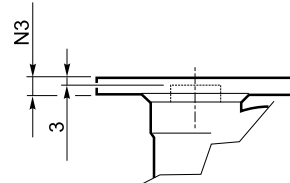


VF 49□...P(IEC)

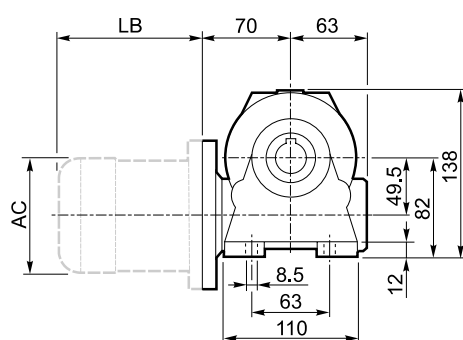
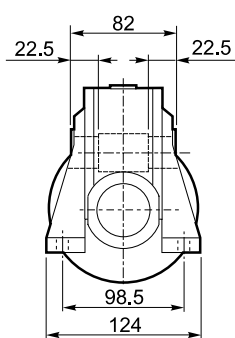
A



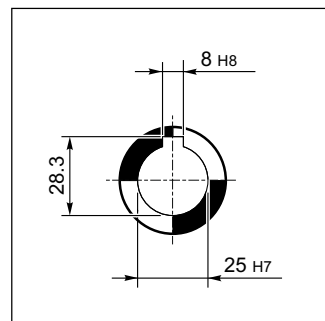
INPUT



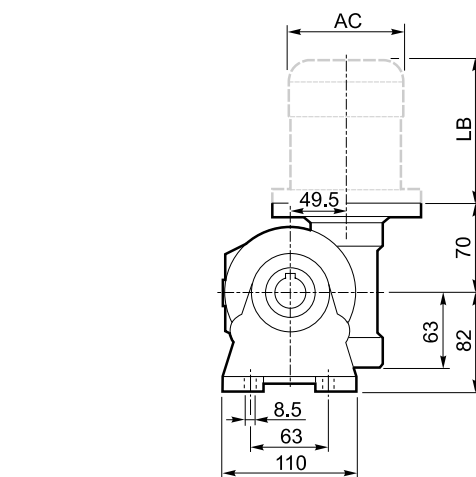
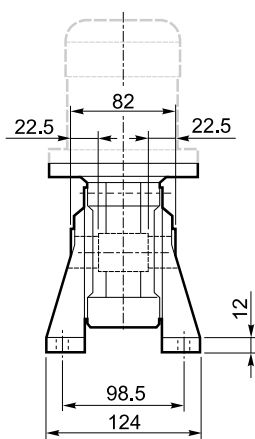
N



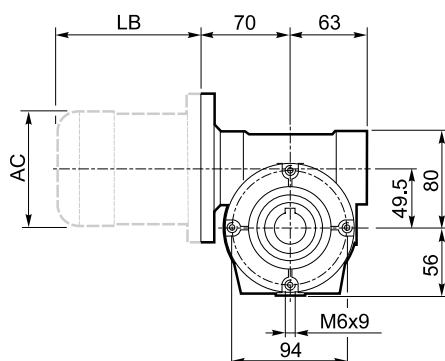
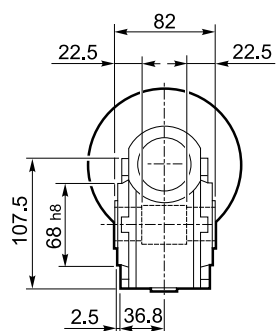
OUTPUT

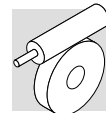


V

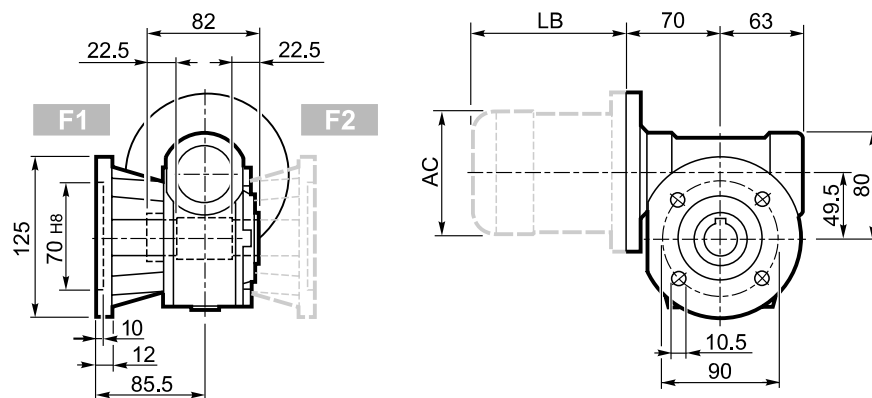


P

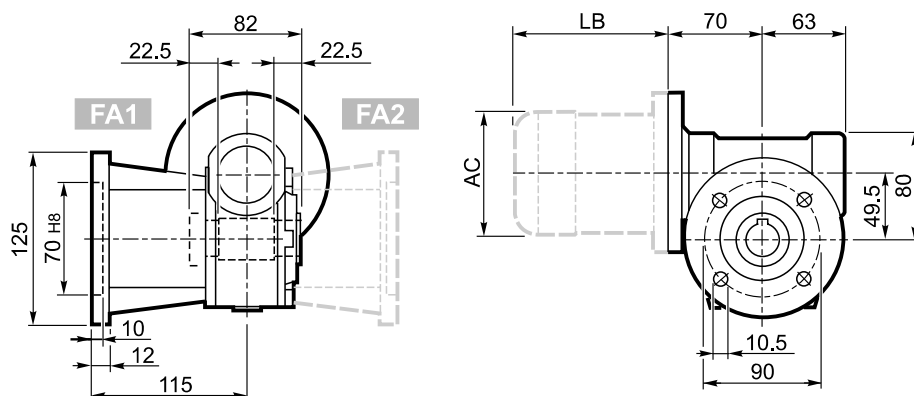




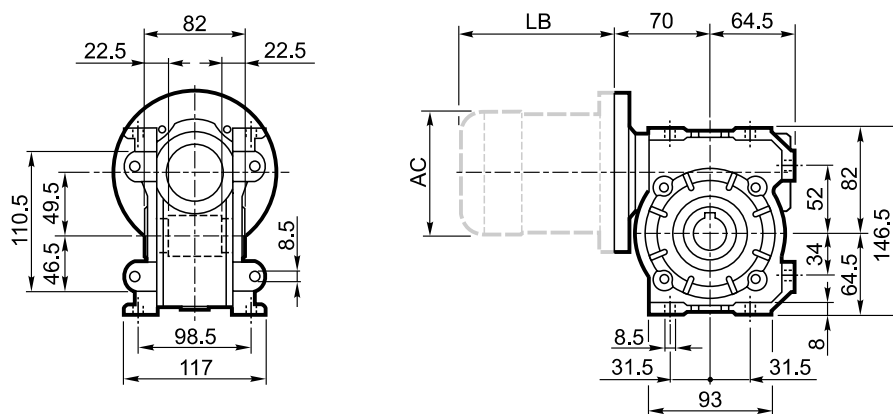
F_




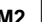


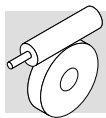
FA_



U

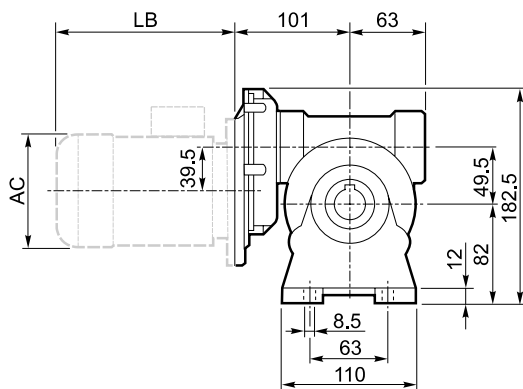
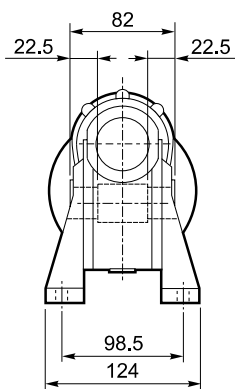


VF 49_												BN		BN...FD BN...FA		K		K...FC	
		M	M1	M2	N	N1	N2	N3	N4			LB	AC	LB	AC	LB	AC	LB	AC
VF 49	P63 B5	11	12.8	4	140	115	95	10.5	9.5	3.0	63	184	121	249	121	165	122	214	122
VF 49	P71 B5	14	16.3	5	160	130	110	10.5	9.5		71	219	138	280	138	186	139	219	139
VF 49	P80 B5	19	21.8	6	200	165	130	10	11.5		80	234	156	306	156	—	—	—	—
VF 49	P63 B14	11	12.8	4	90	75	60	7	6		63	184	121	249	121	—	—	—	—
VF 49	P71 B14	14	16.3	5	105	85	70	10.5	6.5		71	219	138	280	138	—	—	—	—
VF 49	P80 B14	19	21.8	6	120	100	80	10	7		80	234	156	306	156	—	—	—	—

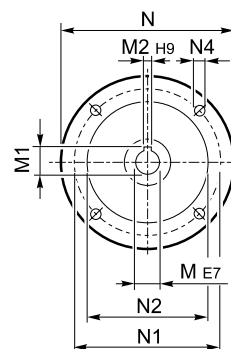
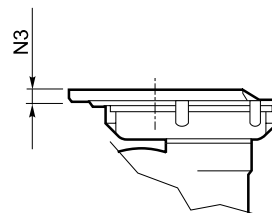


VFR 49□...P(IEC)

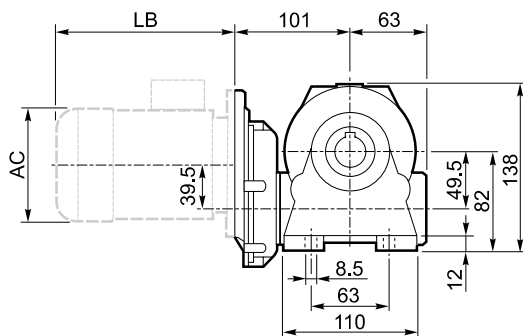
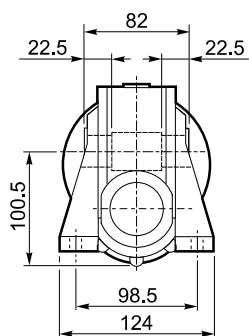
A



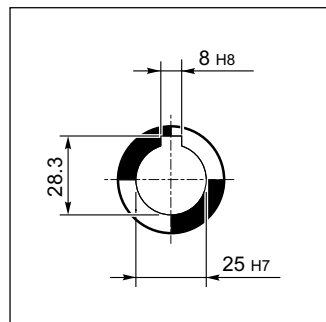
INPUT



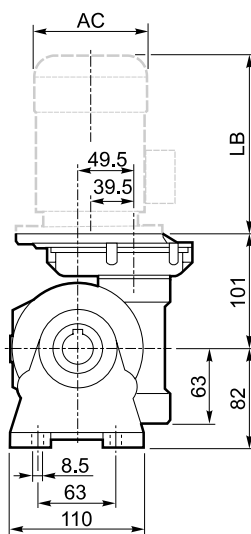
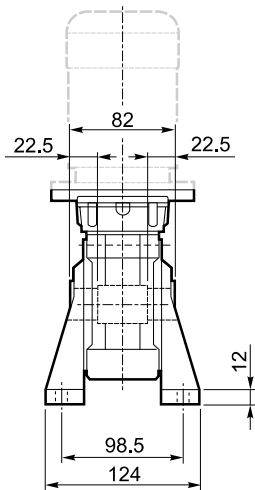
N



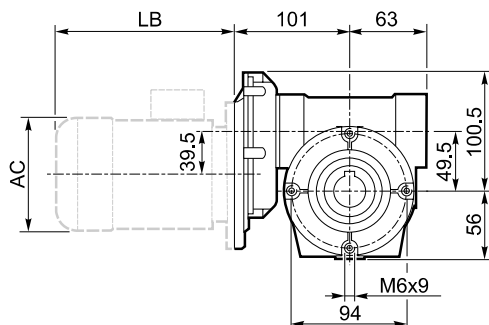
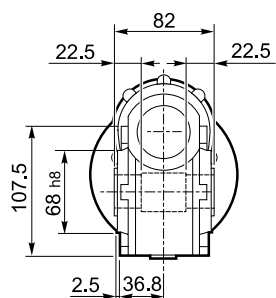
OUTPUT

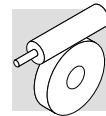


V

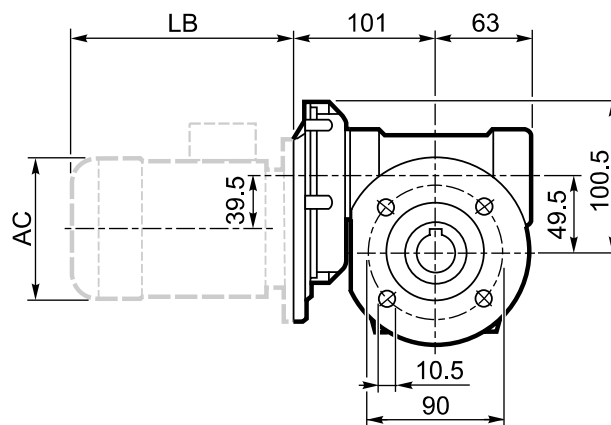
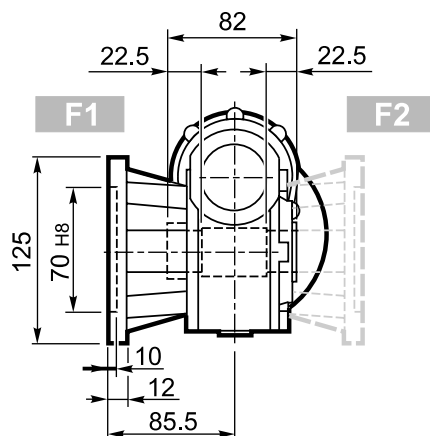


P

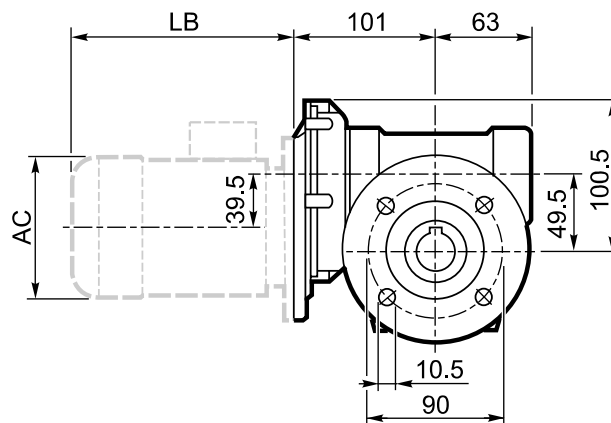
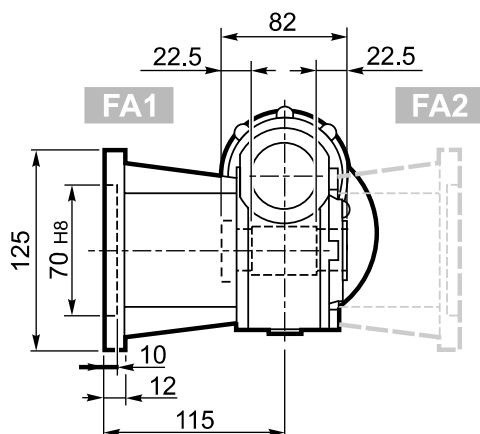




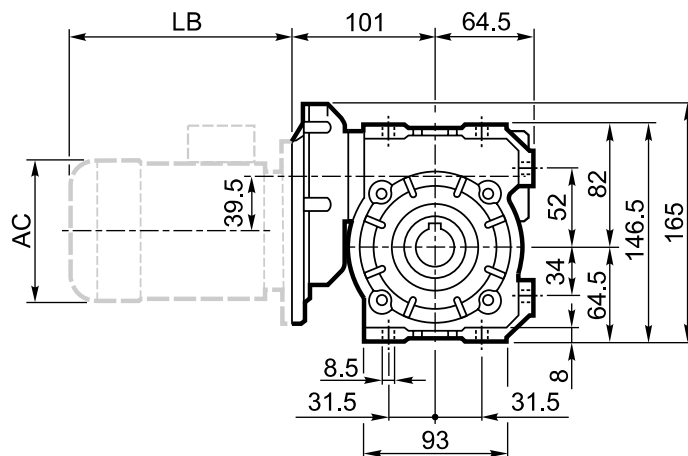
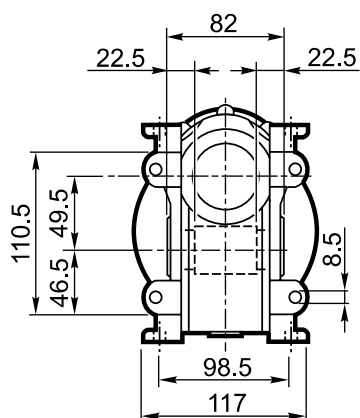
F_



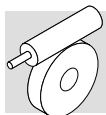
FA_



U

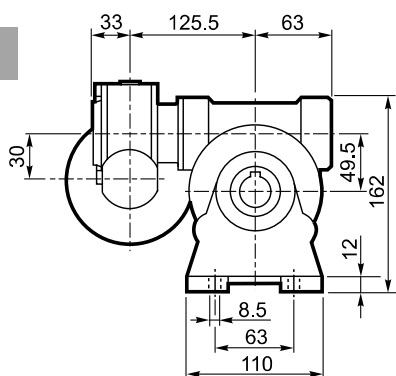


VFR 49_												BN		BN...FD BN...FA	
		M	M1	M2	N	N1	N2	N3	N4			LB	AC	LB	AC
VFR 49	P63 B5	11	12.8	4	140	115	95	11	M8 x 19	5.0	BN 63	184	121	249	121

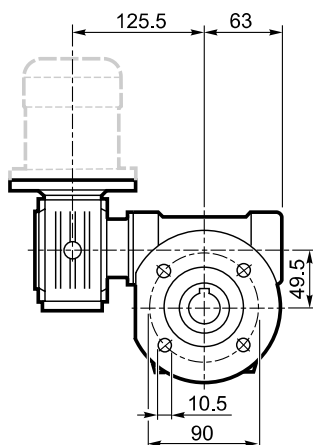


VF/VF 30/49□...P(IEC)

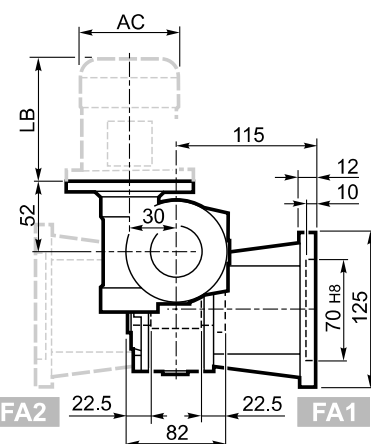
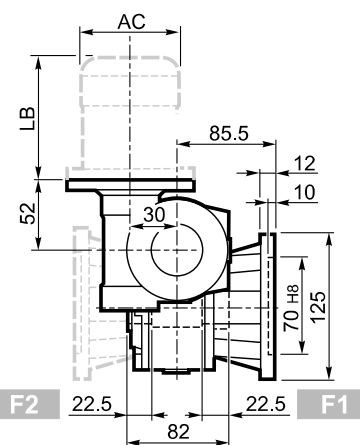
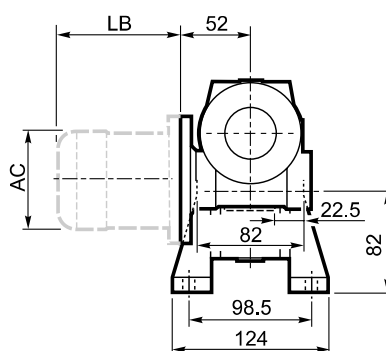
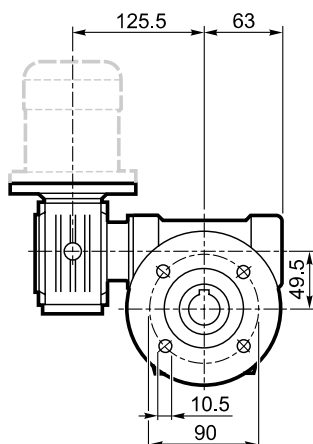
A



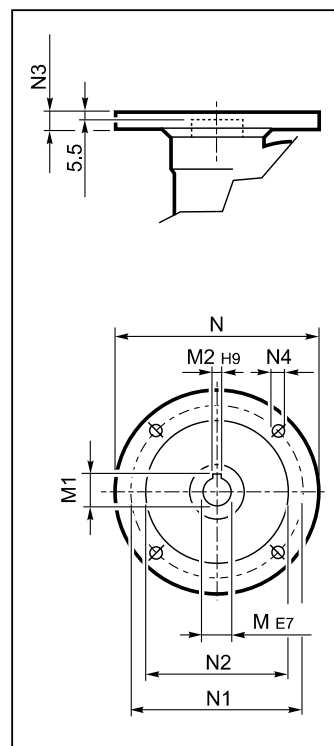
F₋



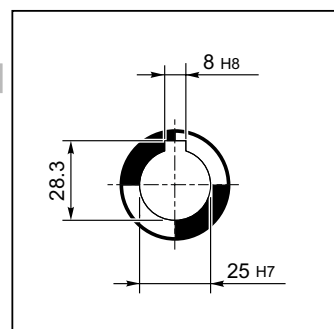
FA₋

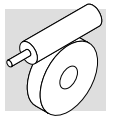


INPUT

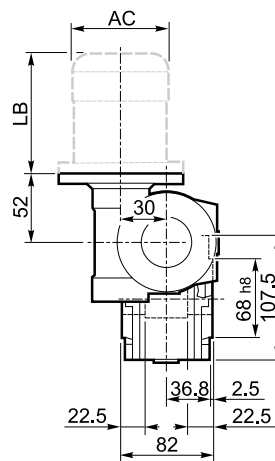
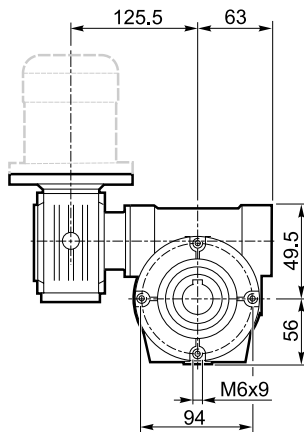


OUTPUT

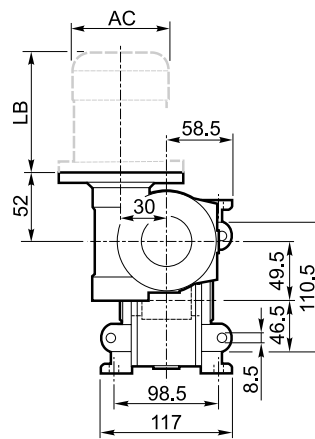
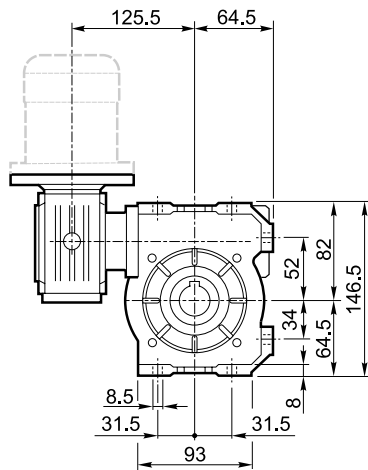








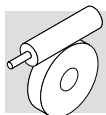
P



U

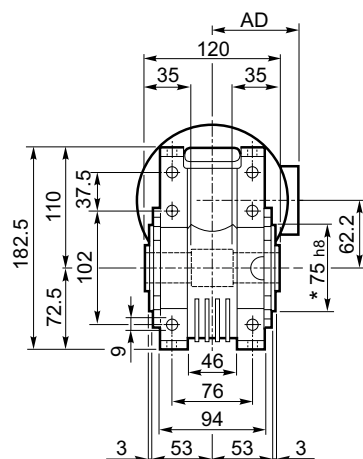
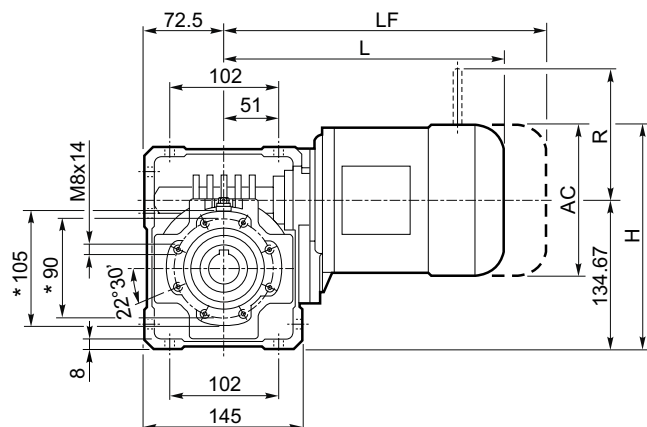


VF/VF 30/49_												BN		BN...FD BN...FA	
		M	M1	M2	N	N1	N2	N3	N4			LB	AC	LB	AC
VF/VF 30/49	P56 B14	9	10.4	3	80	65	50	7	5.5	4.5	BN 56	165	110	—	—
VF/VF 30/49	P63 B14	11	12.8	4	90	75	60	6	5.5		BN 63	184	121	249	121

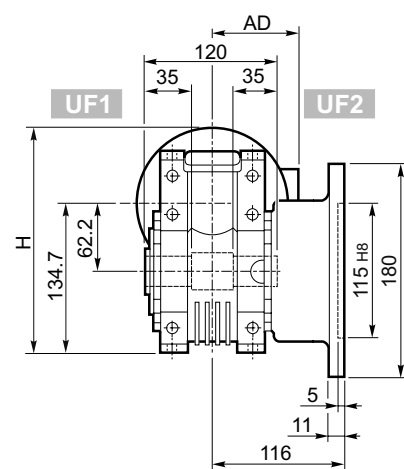
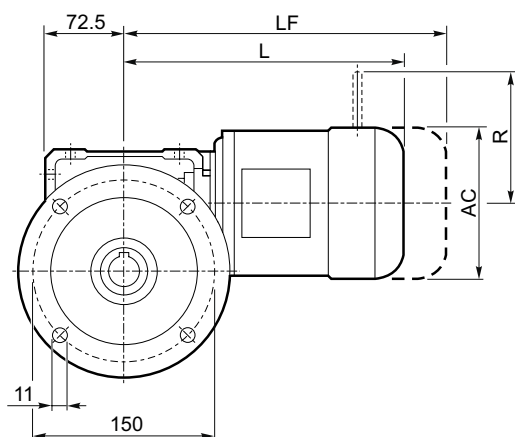


W 63...S

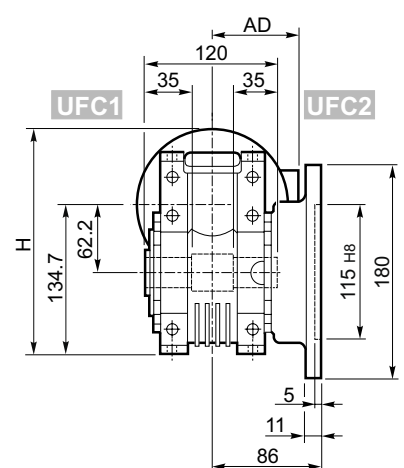
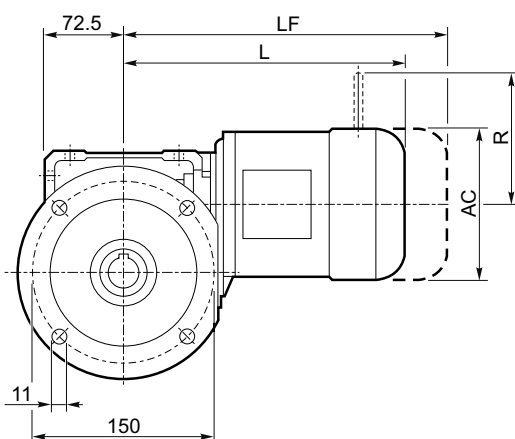
U





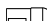


UF_



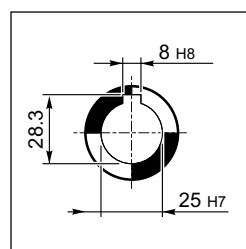
UFC_



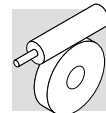
W 63

W 63													
					M_			M...FD M...FA		M...FD		M...FA	
			AC	H	L	AD		LF		R	AD	R	AD
W 63	S1	M1S	138	204	265	108	11	328	13	103	132	124	108
W 63	S1	M1L	138	204	289	108	13	350	15	103	132	124	108
W 63	S2	M2S	156	213	317	119	17	393	20	129	143	134	119

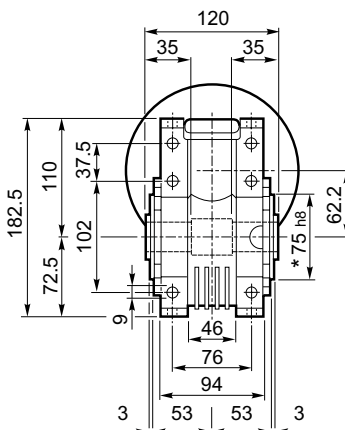
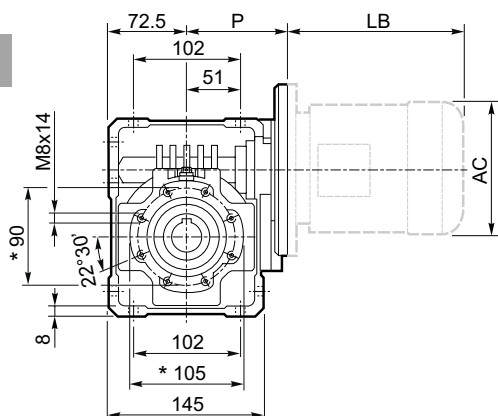
OUTPUT



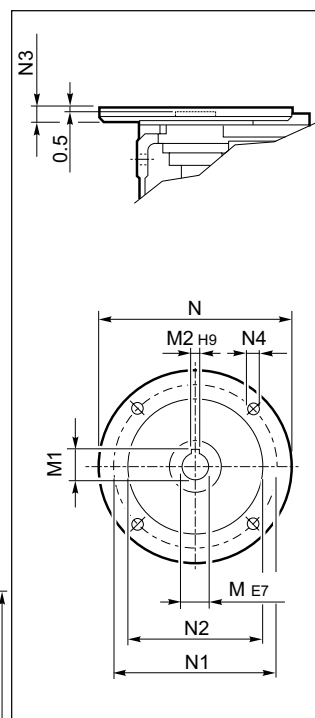
* Da ambo i lati / On both sides / Auf beiden seiten / Tous le deux cotés



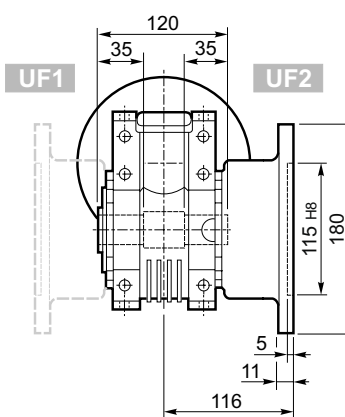
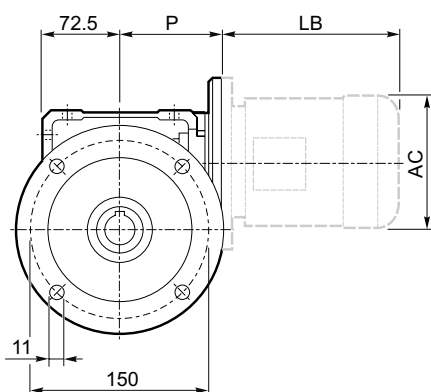
U



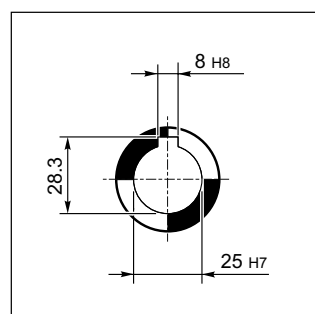
INPUT



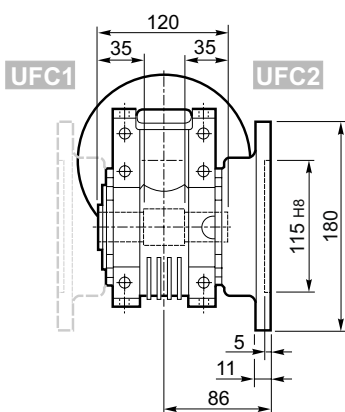
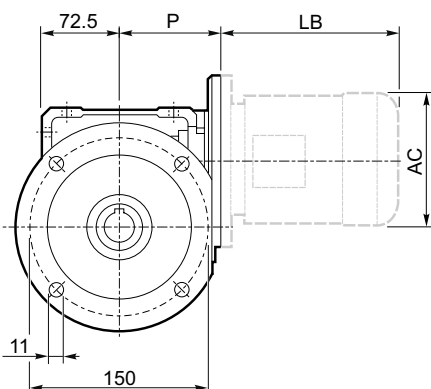
UF_







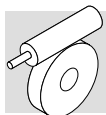
OUTPUT



UFC_

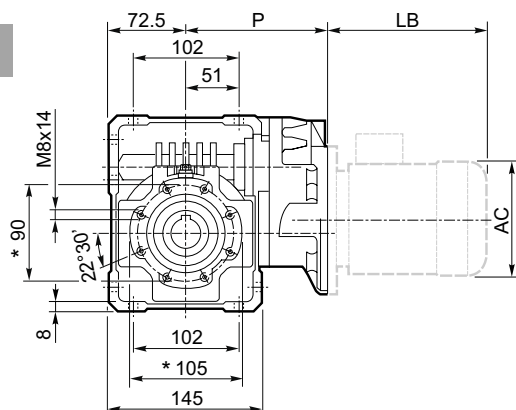


W 63													BN		BN...FD BN...FA	
		M	M1	M2	N	N1	N2	N3	N4	P			LB	AC	LB	AC
W 63	P71 B5	14	16.3	5	160	130	110	11	9	95	6.3	BN 71	219	138	280	138
W 63	P80 B5	19	21.8	6	200	165	130	12	11.5	102	6.5	BN 80	234	156	306	156
W 63	P90 B5	24	27.3	8	200	165	130	12	11.5	102	6.4	BN 90	276	176	359	176
W 63	P71 B14	14	16.3	5	105	85	70	11	6.5	95	6.1	BN 71	219	138	280	138
W 63	P80 B14	19	21.8	6	120	100	80	11	6.5	102	6.3	BN 80	234	156	306	156
W 63	P90 B14	24	27.3	8	140	115	95	11	8.5	102	6.3	BN 90	276	176	359	176

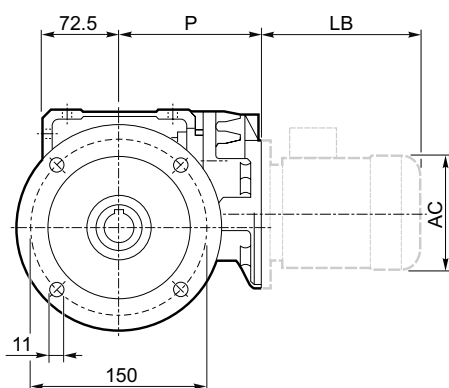


WR 63...P(IEC)

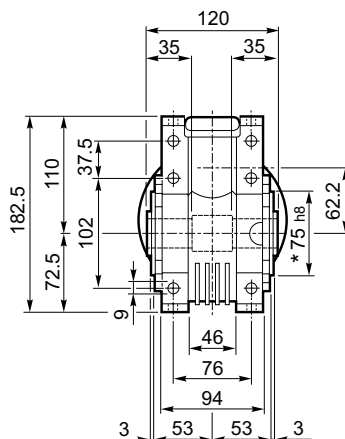
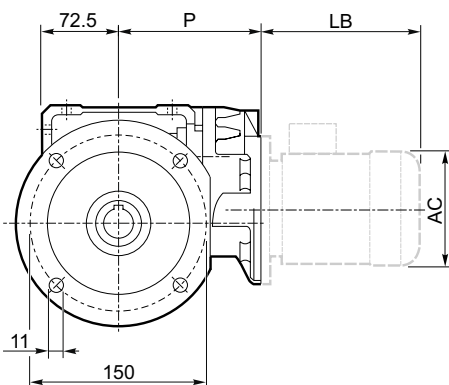
U



UF_

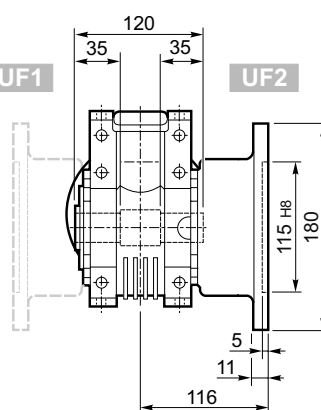


UFC_



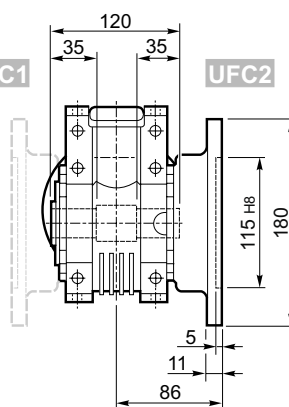
UF1

UF2

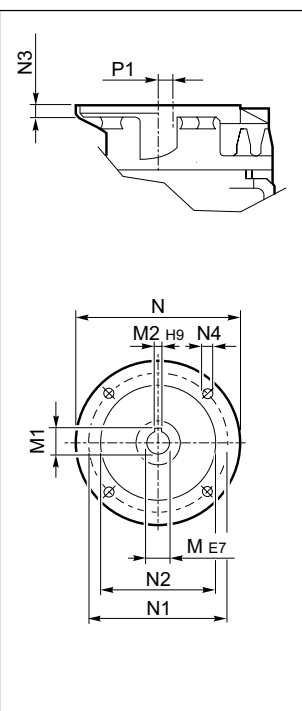


UFC1

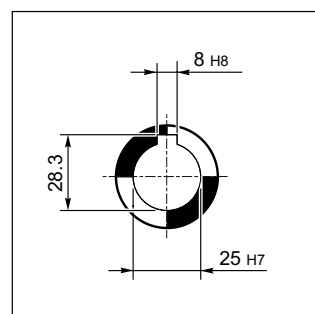
UFC2



INPUT

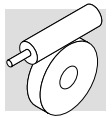


OUTPUT

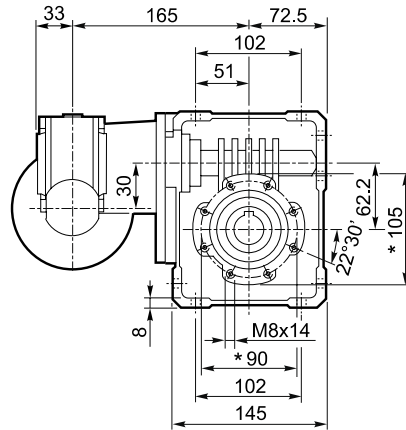
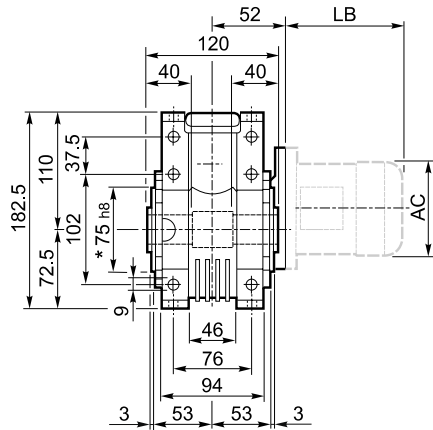


WR 63_														BN		BN...FD BN...FA	
		M	M ₁	M ₂	N	N ₁	N ₂	N ₃	N ₄	P	P ₁			LB	AC	LB	AC
WR 63	P63 B5	11	12.8	4	140	115	95	10	M8x10	133.5	11.42	7.1	BN 63	184	121	249	121
WR 63	P71 B5	14	16.3	5	160	130	110	10	M8x10	133.5	11.42		BN 71	219	138	280	138

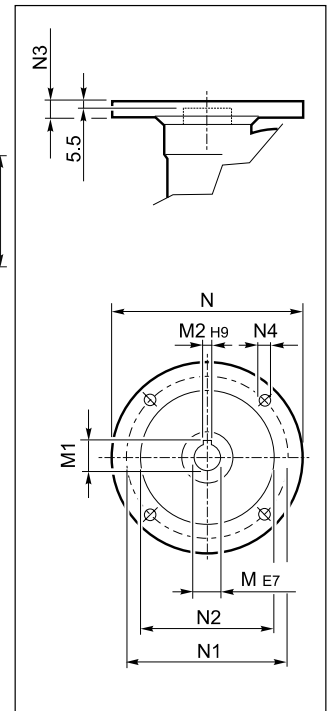
* Da ambo i lati / On both sides / Auf beiden seiten / Tous le deux cotés



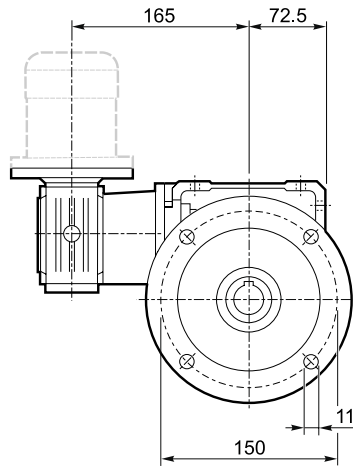
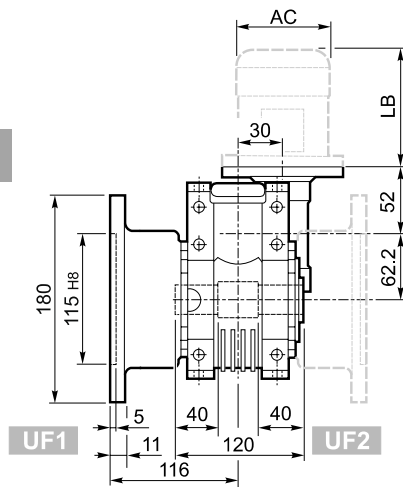
U



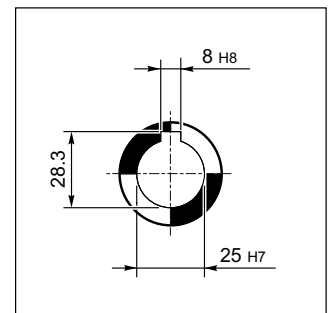
INPUT



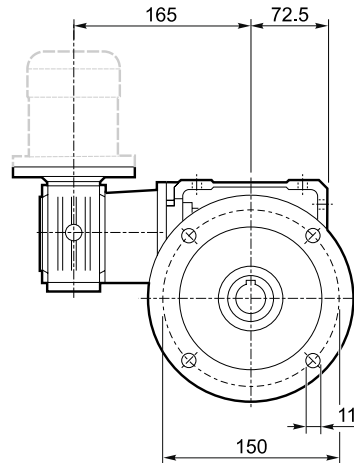
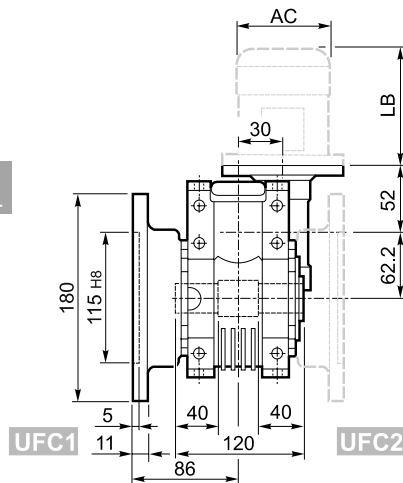
UF_

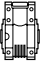


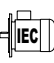


OUTPUT

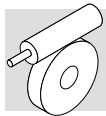


UFC_



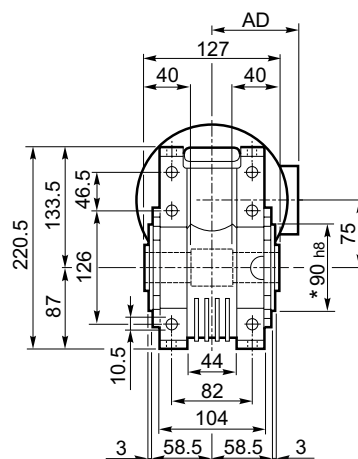
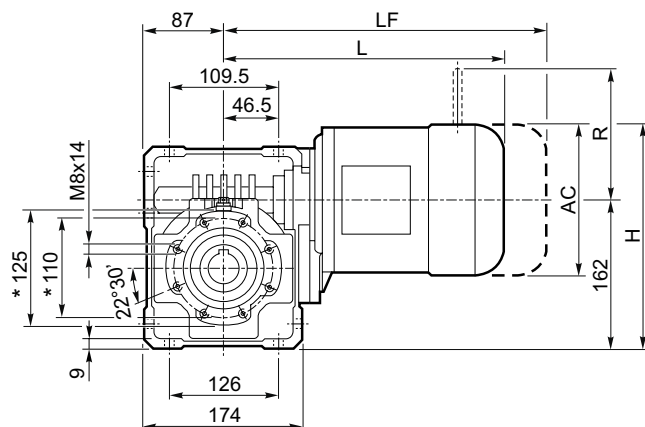
VF/W 30/63_												BN		BN...FD BN...FA		K		K...FC	
		M	M1	M2	N	N1	N2	N3	N4	 Kg		LB	AC	LB	AC	LB	AC	LB	AC
VF/W 30/63	P56 B5	9	10.4	3	120	100	80	7	7	8.0	56	165	110	—	—	—	—	—	—
VF/W 30/63	P63 B5	11	12.8	4	140	115	95	8	9.5		63	184	121	249	121	165	122	214	122
VF/W 30/63	P63 B14	9	10.4	3	80	65	50	7	5.5		63	184	121	249	121	165	122	214	122
VF/W 30/63	P63 B14	11	12.8	4	90	75	60	6	5.5		63	184	121	249	121	—	—	—	—

* Da ambo i lati / On both sides / Auf beiden seiten / Tous le deux cotés

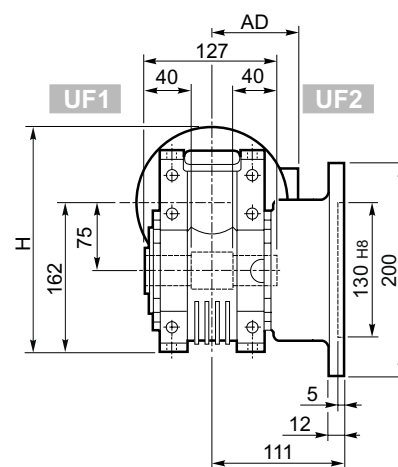
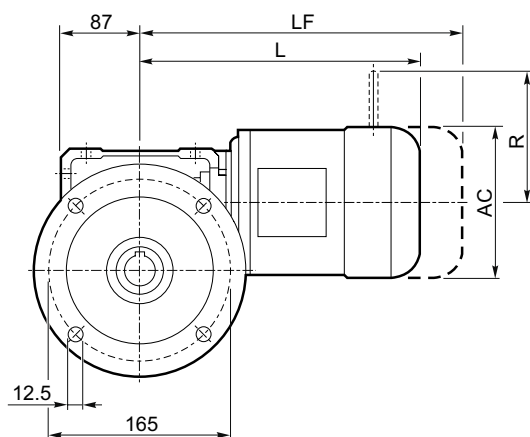


W 75...S

U

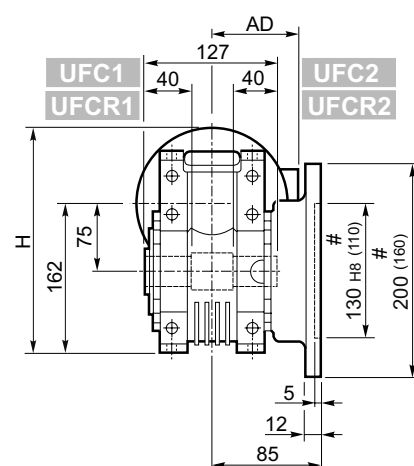
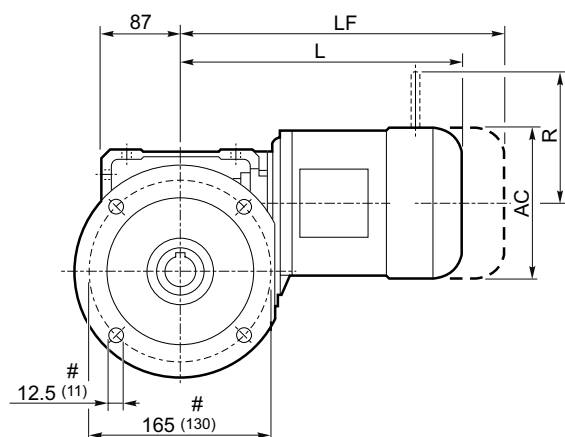


UF_

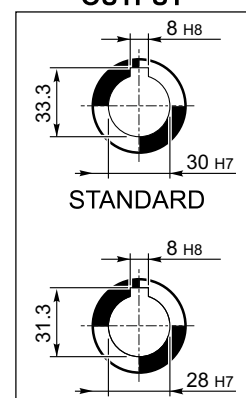


UFC_

UFCR_#

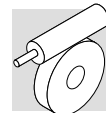


OUTPUT

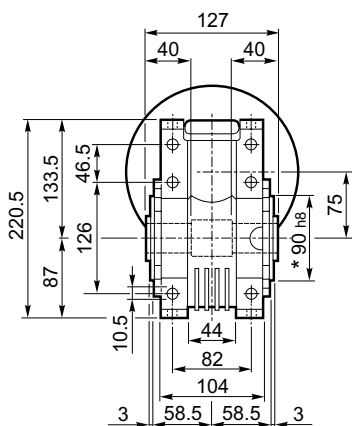
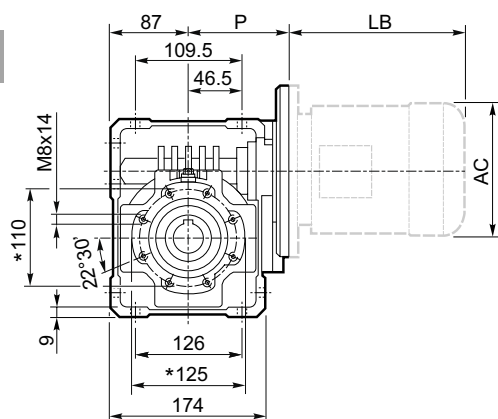


W 75													
			AC	H	L	M_		M...FD		M...FD		M...FA	
						AD	Kg	LF	Kg	R	AD	R	AD
W 75	S1	M1S	138	231	284	108	14.0	347	16.2	103	132	124	108
W 75	S1	M1L	138	231	308	108	16.0	369	18.2	103	132	124	108
W 75	S2	M2S	153	240	333	119	18.5	409	21.6	129	143	134	119
W 75	S3	M3S	193	258.5	376	142	25.6	472	31	160	155	160	142
W 75	S3	M3L	193	258.5	408	142	28.6	499	34	160	155	160	142

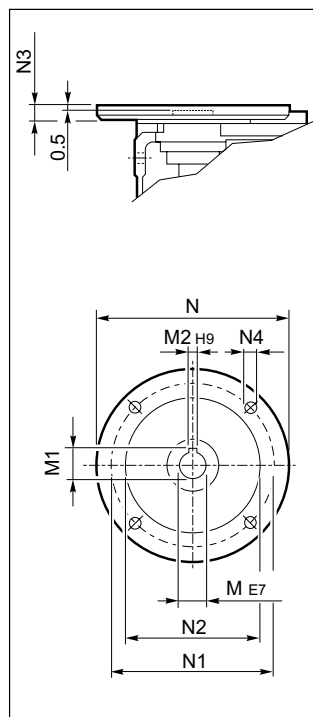
* Da ambo i lati / On both sides / Auf beiden seiten / Tous le deux cotés
Flangia ridotta / Reduced flange / Verkürzte Flansch / Bride réduit



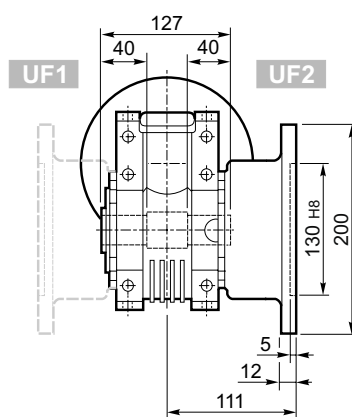
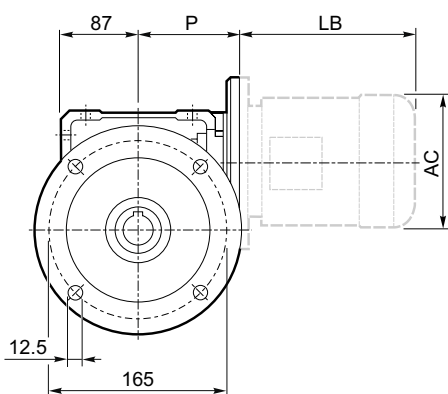
U



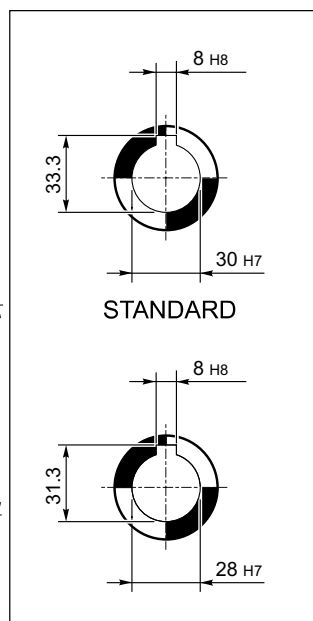
INPUT



UF_

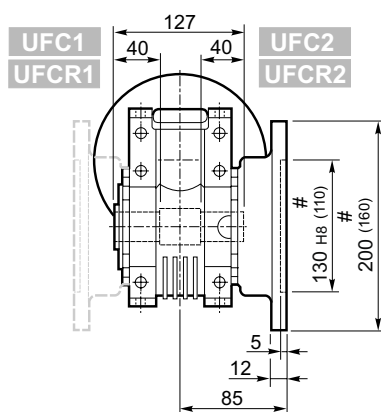
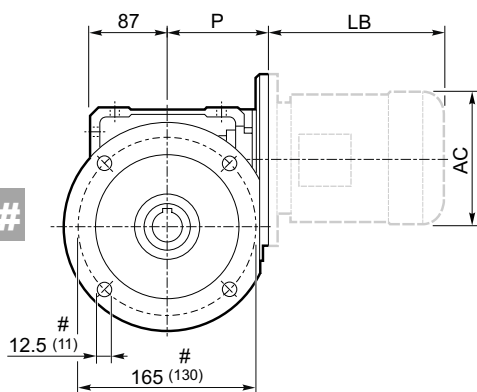






OUTPUT



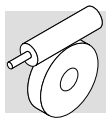
UFC_

UFCR_#



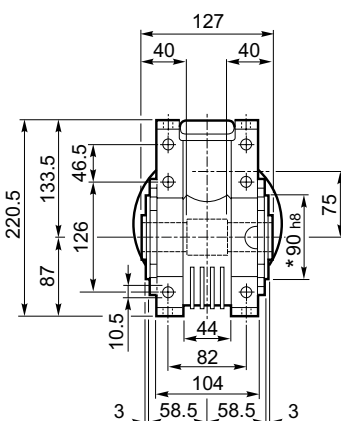
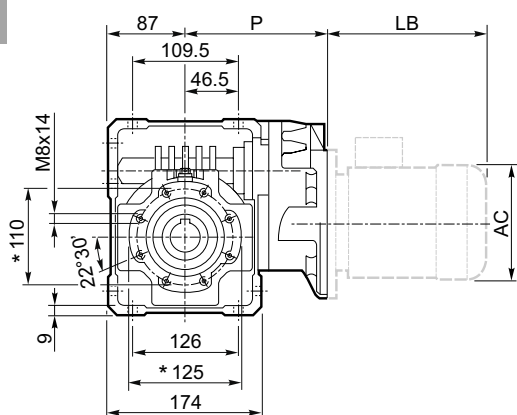
W 75_													BN		BN...FD BN...FA	
		M	M1	M2	N	N1	N2	N3	N4	P			LB	AC	LB	AC
W 75	P71 B5	14	16.3	5	160	130	110	11	9	112	9.5	BN 71	219	138	280	138
W 75	P80 B5	19	21.8	6	200	165	130	12	11.5	112	9.7	BN 80	234	156	306	156
W 75	P90 B5	24	27.3	8	200	165	130	12	11.5	112	9.6	BN 90	276	176	359	176
W 75	P100 B5	28	31.3	8	250	215	180	13	12.5	120	9.7	BN 100	307	195	398	195
W 75	P112 B5	28	31.3	8	250	215	180	13	12.5	120	9.7	BN 112	325	219	424	219
W 75	P80 B14	19	21.8	6	120	100	80	7.5	6.5	112	9.4	BN 80	234	156	306	156
W 75	P90 B14	24	27.3	8	140	115	95	7.5	8.5	112	9.4	BN 90	276	176	359	176
W 75	P100 B14	28	31.3	8	160	130	110	10	8.5	120	9.5	BN 100	307	195	398	195
W 75	P112 B14	28	31.3	8	160	130	110	10	8.5	120	9.5	BN 112	325	219	424	219

* Da ambo i lati / On both sides / Auf beiden seiten / Tous le deux cotés
Flangia ridotta / Reduced flange / Verkürzte Flansch / Bride réduit

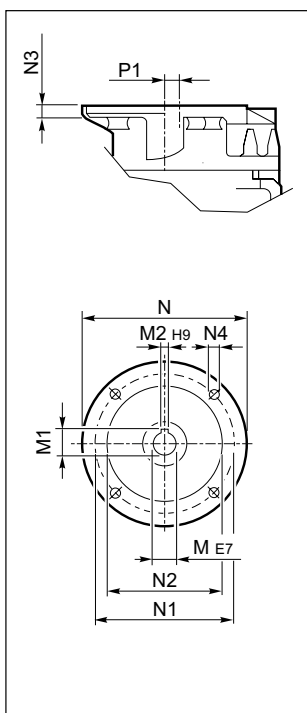


WR 75...P(IEC)

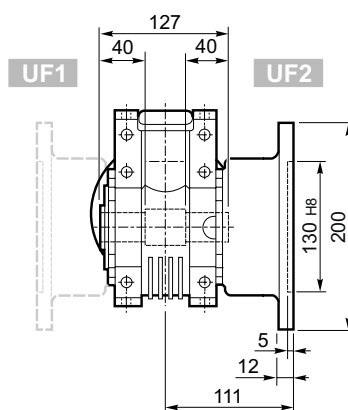
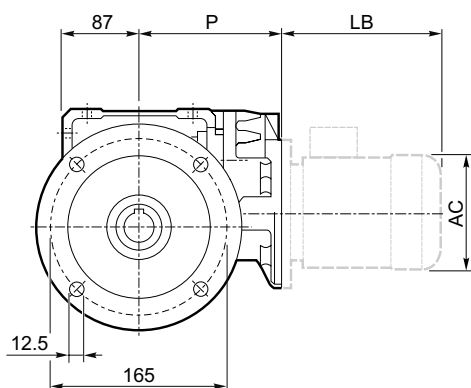
U



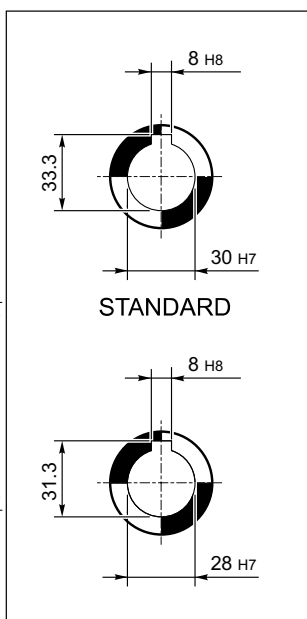
INPUT



UF_

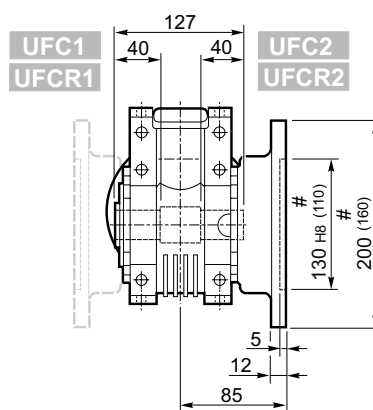
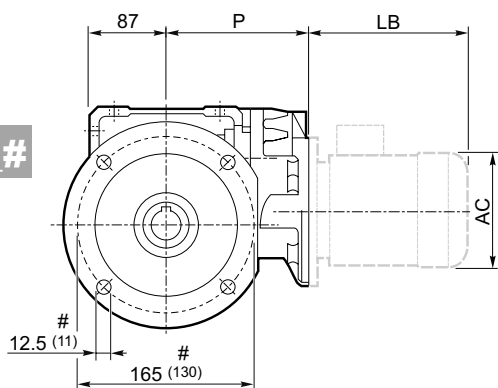


OUTPUT



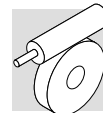
UFC_

UFCR_#

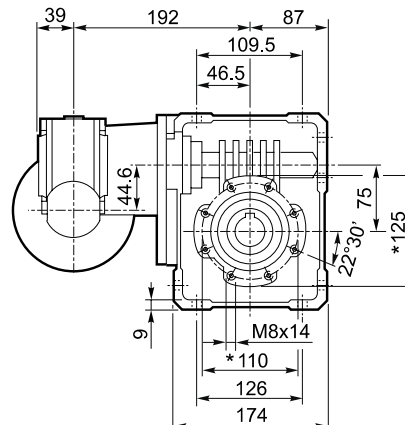
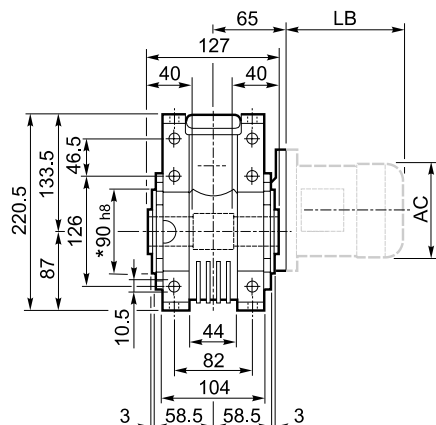


WR 75_														BN		BN...FD BN...FA	
		M	M1	M2	N	N1	N2	N3	N4	P	P1			LB	AC	LB	AC
WR 75	P63 B5	11	12.8	4	140	115	95	10	M8x10	152	23.53	10.6	BN 63	184	121	249	121
WR 75	P71 B5	14	16.3	5	160	130	110	10	M8x10	152	23.53	10.7	BN 71	219	138	280	138
WR 75	P80 B5	19	21.8	6	200	165	130	12	M10x13	163.5	11	11.5	BN 80	234	156	306	156
WR 75	P90 B5	24	27.3	8	200	165	130	12	M10x13	163.5	11	11.6	BN 90	276	176	359	176

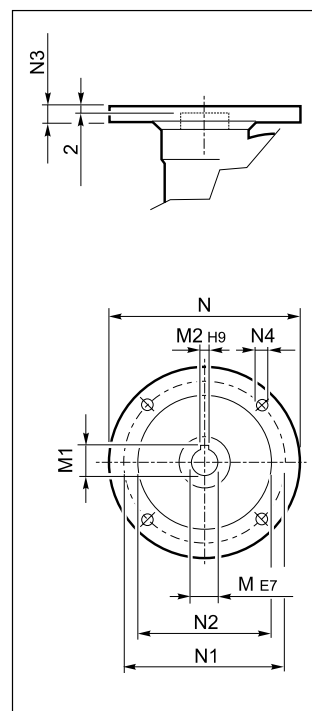
* Da ambo i lati / On both sides / Auf beiden Seiten / Tous le deux cotés
Flangia ridotta / Reduced flange / Verkürzte Flansch / Bride réduit



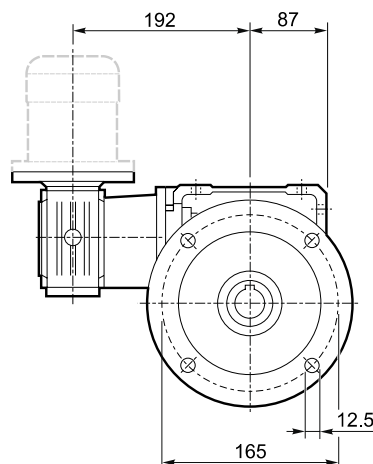
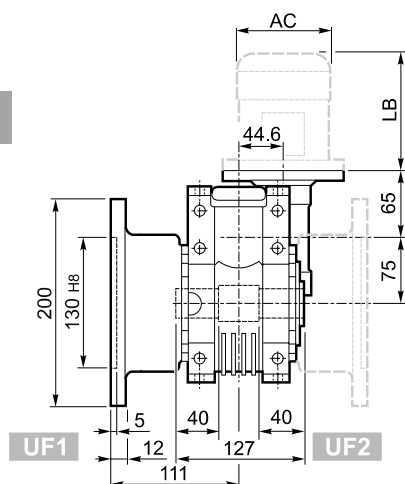
U



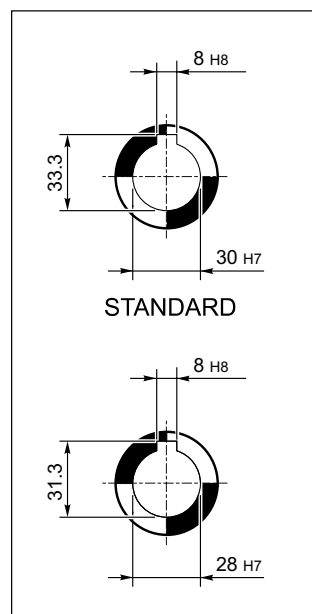
INPUT



UF_

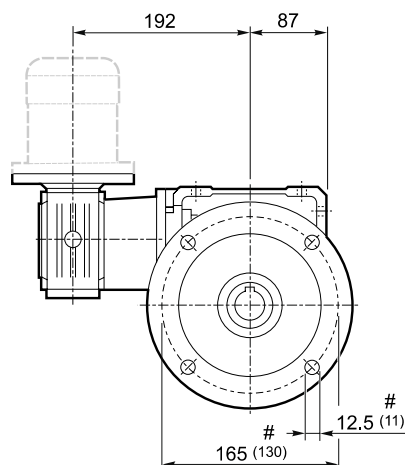
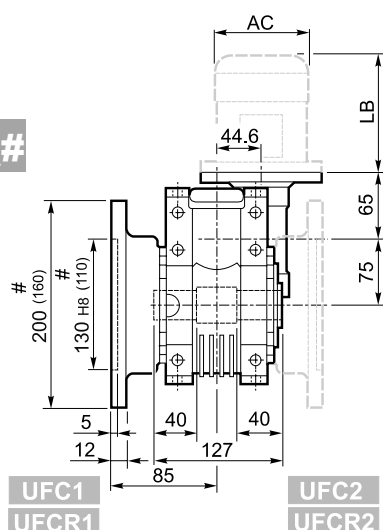






OUTPUT



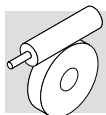
UFC_

UFCR_#



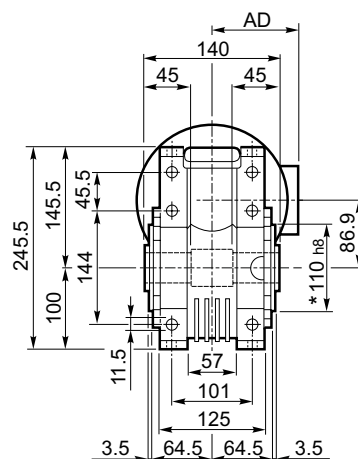
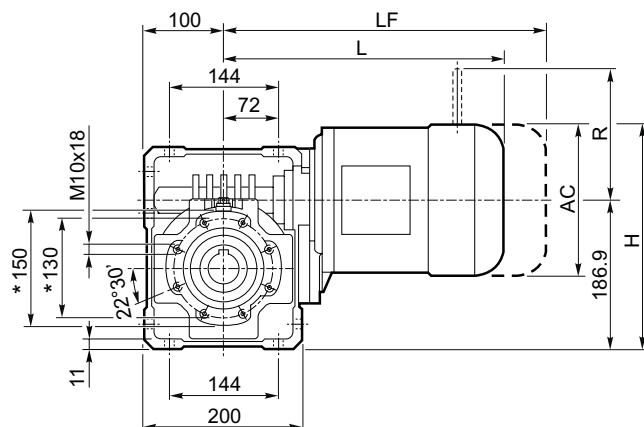
VF/W 44/75_												BN		BN...FD BN...FA		K		K...FC	
		M	M1	M2	N	N1	N2	N3	N4			LB	AC	LB	AC	LB	AC	LB	AC
VF/W 44/75	P63 B5	11	12.8	4	140	115	95	10	9.5	12.5	63	184	121	249	121	165	122	214	122
VF/W 44/75	P71 B5	14	16.3	5	160	130	110	10	9.5		71	219	138	280	138	186	139	219	139
VF/W 44/75	P63 B14	11	12.8	4	90	75	60	8	5.5		63	184	121	249	121	—	—	—	—
VF/W 44/75	P71 B14	14	16.3	5	105	85	70	10	7		71	219	138	280	138	—	—	—	—

* Da ambo i lati / On both sides / Auf beiden Seiten / Tous le deux cotés
Flangia ridotta / Reduced flange / Verkürzte Flansch / Bride réduit

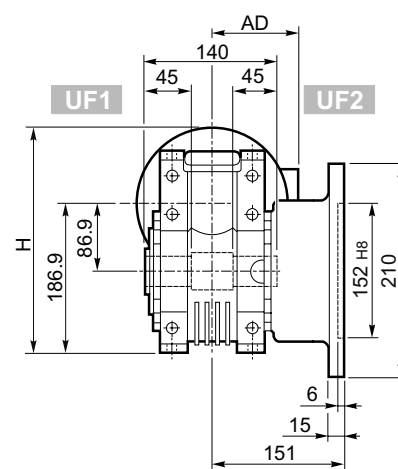
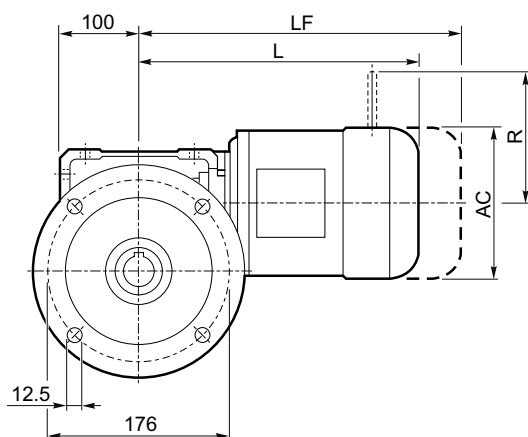


W 86...S

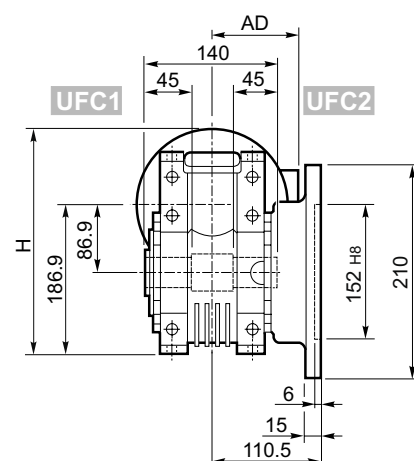
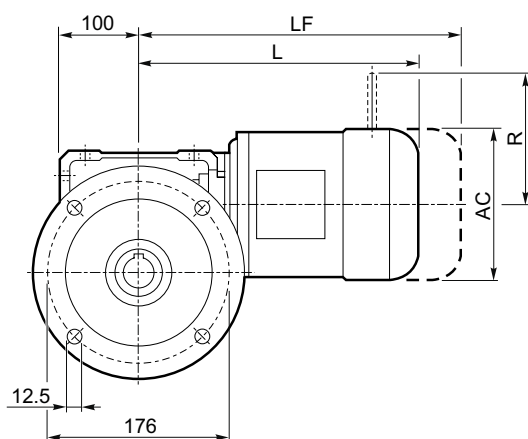
U



UF

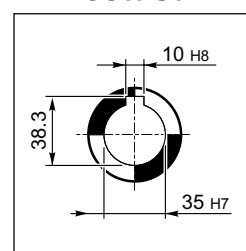


UFC

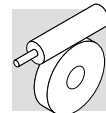


W 86													
			AC	H	L	M _{AD}	M _{Kg}	M...FD M...FA	LF	M _{Kg}	M...FD	AD	M...FA
W 86	S1	M1S	138	256	300	108	18.1	363	20.3	103	132	124	108
W 86	S1	M1L	138	256	324	108	20.1	385	22.3	103	132	124	108
W 86	S2	M2S	156	265	349	119	22.6	425	25.7	129	143	134	119
W 86	S3	M3S	193	283.5	392	142	29.7	488	35	160	155	160	142
W 86	S3	M3L	193	283.5	424	142	33	515	36	160	155	160	142

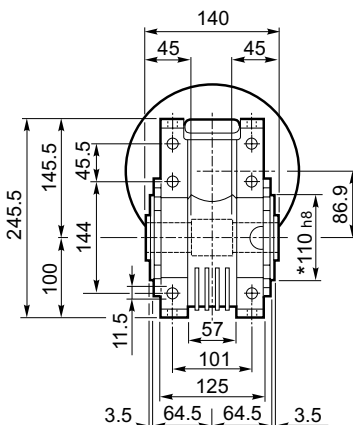
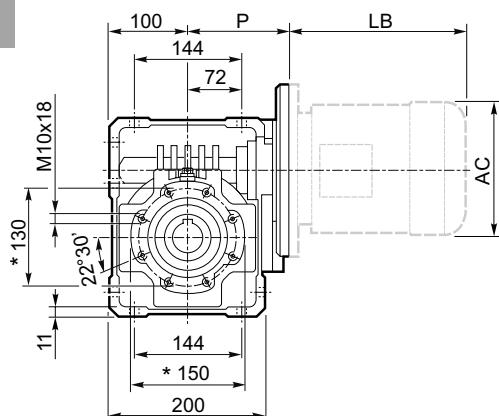
OUTPUT



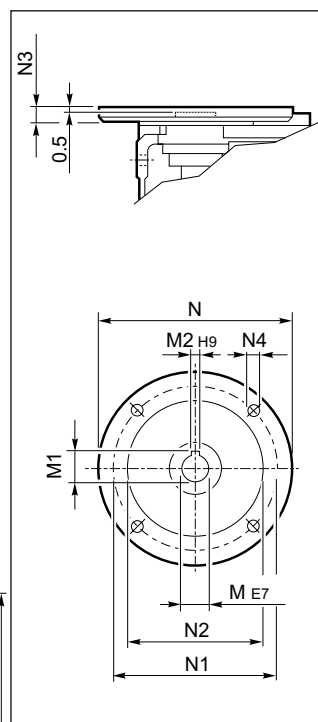
* Da ambo i lati / On both sides / Auf beiden seiten / Tous le deux cotés



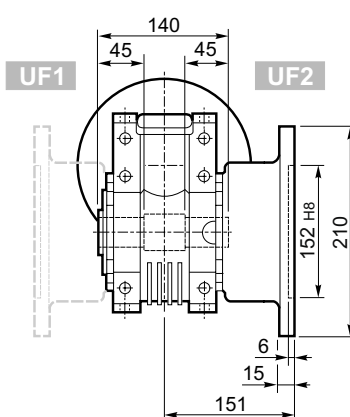
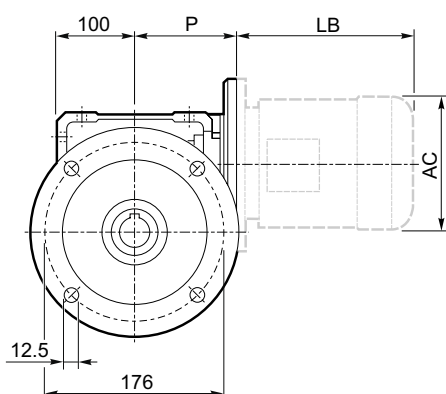
U



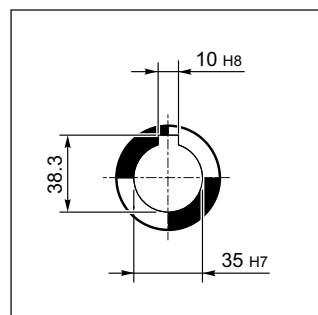
INPUT



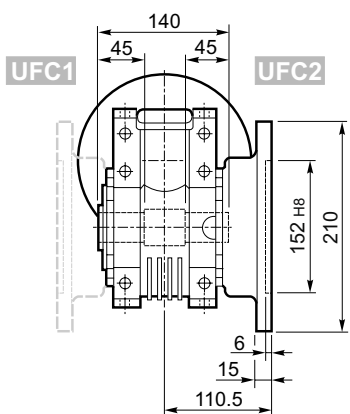
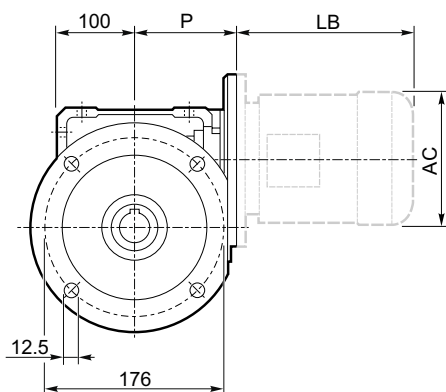
UF_



OUTPUT

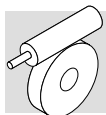


UFC_



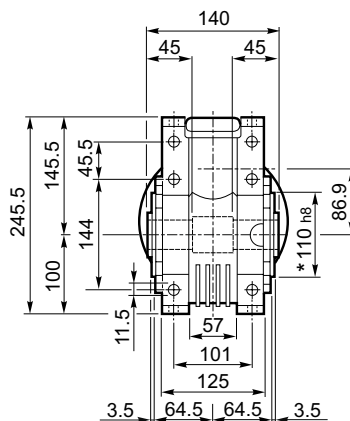
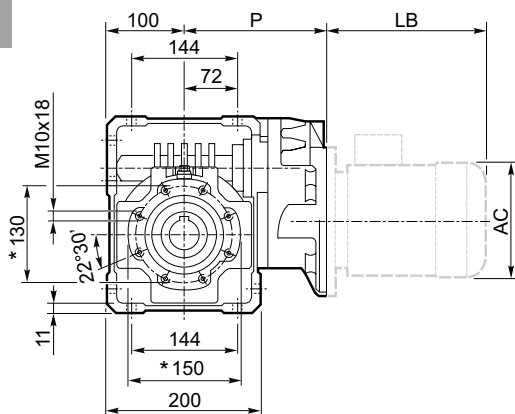
W 86_													BN		BN...FD BN...FA	
		M	M1	M2	N	N1	N2	N3	N4	P			LB	AC	LB	AC
W 86	P71 B5	14	16.3	5	160	130	110	11	9	128	13.6	BN 71	219	138	280	138
W 86	P80 B5	19	21.8	6	200	165	130	12	11.5	128	13.8	BN 80	234	156	306	156
W 86	P90 B5	24	27.3	8	200	165	130	12	11.5	128	13.7	BN 90	276	176	359	176
W 86	P100 B5	28	31.3	8	250	215	180	13	12.5	136	13.8	BN 100	307	195	398	195
W 86	P112 B5	28	31.3	8	250	215	180	13	12.5	136	13.8	BN 112	325	219	424	219
W 86	P80 B14	19	21.8	6	120	100	80	7.5	6.5	128	13.5	BN 80	234	156	306	156
W 86	P90 B14	24	27.3	8	140	115	95	7.5	8.5	128	13.5	BN 90	276	176	359	176
W 86	P100 B14	28	31.3	8	160	130	110	10	8.5	136	13.6	BN 100	307	195	398	195
W 86	P112 B14	28	31.3	8	160	130	110	10	8.5	136	13.6	BN 112	325	219	424	219

* Da ambo i lati / On both sides / Auf beiden seiten / Tous le deux cotés

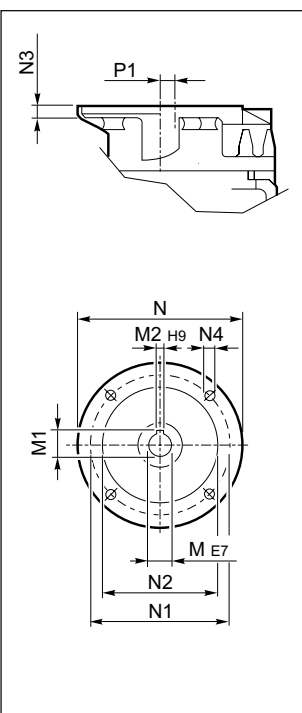


WR 86...P(IEC)

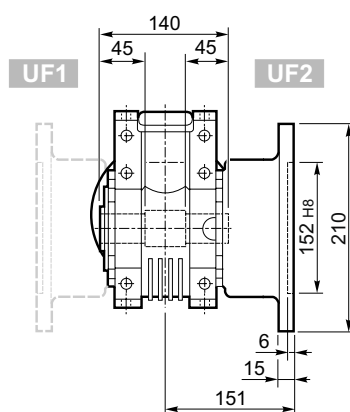
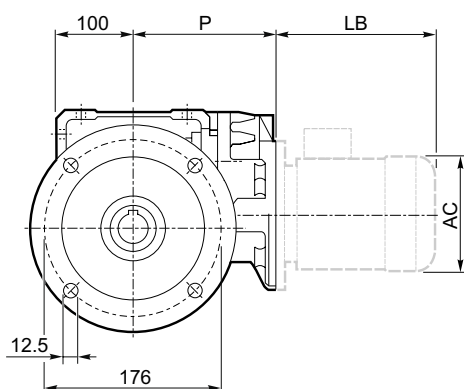
U



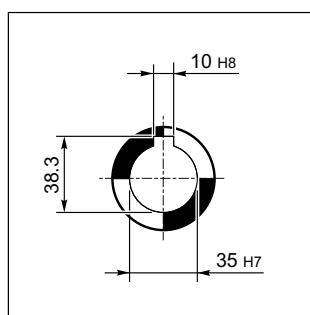
INPUT



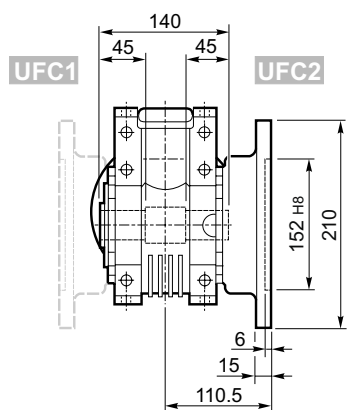
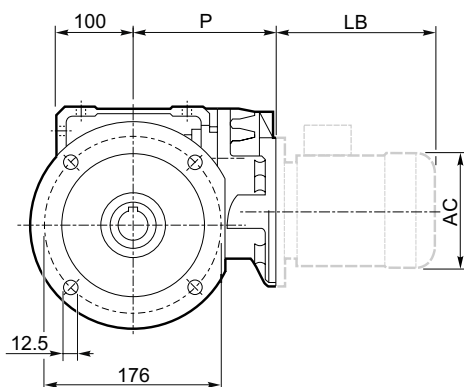
UF_







OUTPUT

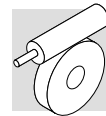
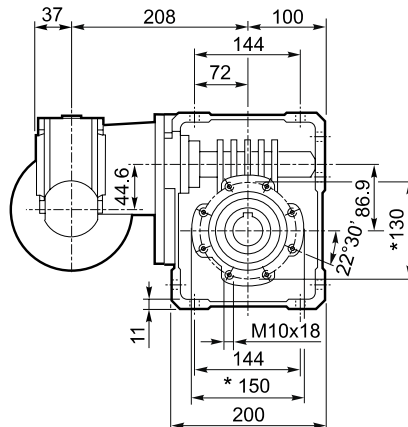
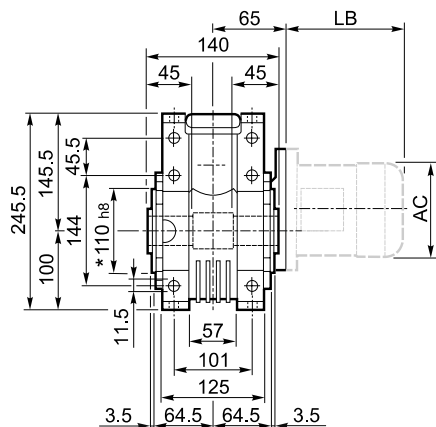
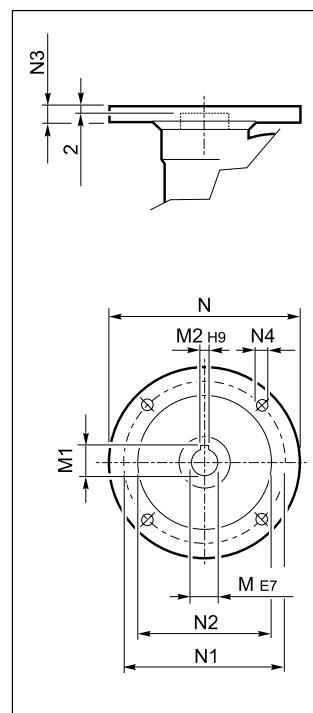
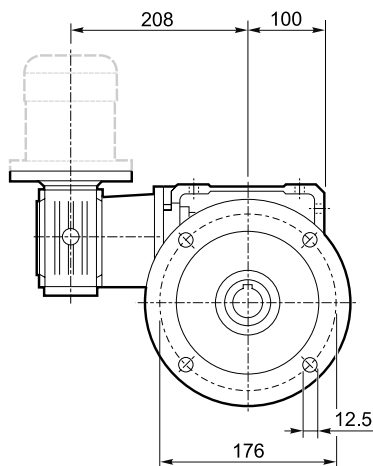
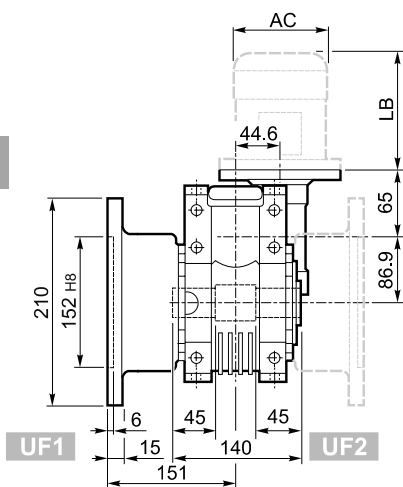
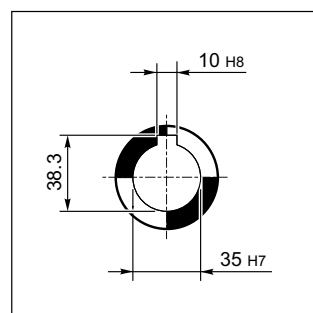
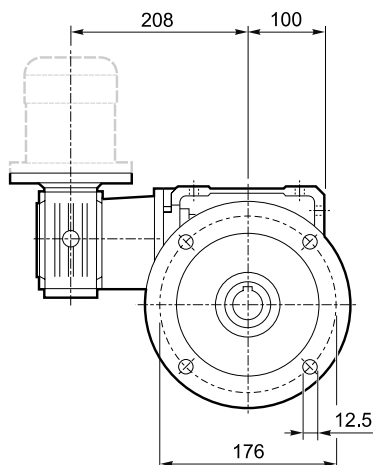
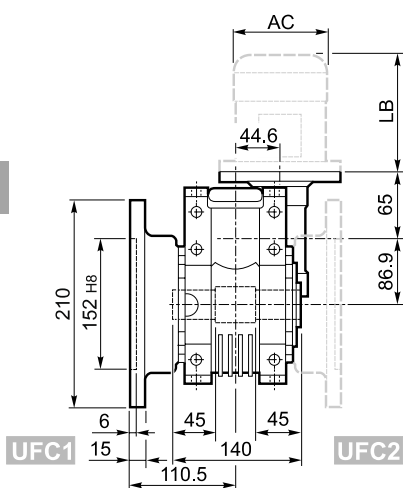




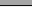
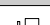
UFC_



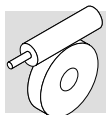
WR 86_														BN		BN...FD BN...FA	
		M	M1	M2	N	N1	N2	N3	N4	P	P1			LB	AC	LB	AC
WR 86	P63 B5	11	12.8	4	140	115	95	10	M8x10	168	35.4	14.3	BN 63	184	121	249	121
WR 86	P71 B5	14	16.3	5	160	130	110	10	M8x10	168	35.4	14.4	BN 71	219	138	280	138
WR 86	P80 B5	19	21.8	6	200	165	130	12	M10x13	179.5	22.9	15.2	BN 80	234	156	306	156
WR 86	P90 B5	24	27.3	8	200	165	130	12	M10x13	179.5	22.9	15.3	BN 90	276	176	359	176

* Da ambo i lati / On both sides / Auf beiden seiten / Tous le deux cotés

**U****INPUT****UF****OUTPUT****UFC**

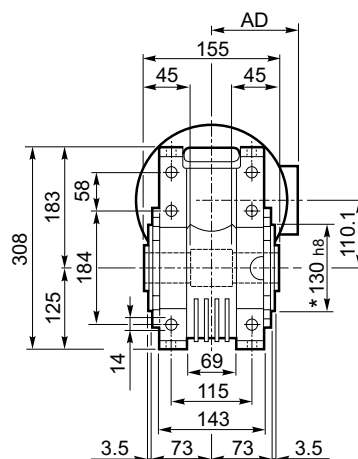
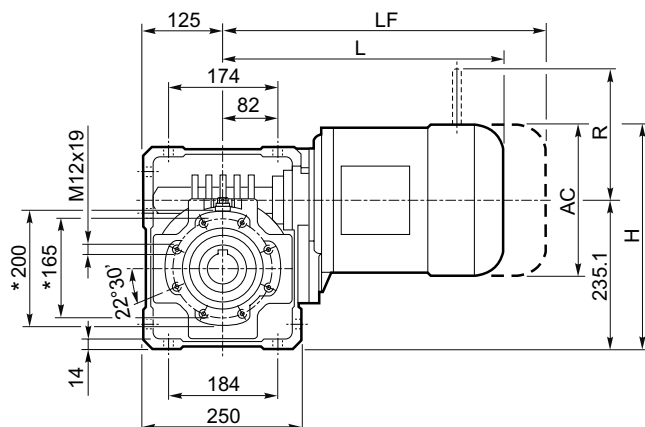
VF/W 44/86_												BN		BN...FD BN...FA		K		K...FC	
		M	M1	M2	N	N1	N2	N3	N4			LB	AC	LB	AC	LB	AC	LB	AC
VF/W 44/86	P63 B5	11	12.8	4	140	115	95	10	9.5	16.6	63	184	121	249	121	165	122	214	122
VF/W 44/86	P71 B5	14	16.3	5	160	130	110	10	9.5		71	219	138	280	138	186	139	219	139
VF/W 44/86	P63 B14	11	12.8	4	90	75	60	8	5.5		63	184	121	249	121	—	—	—	—
VF/W 44/86	P71 B14	14	16.3	5	105	85	70	10	7		71	219	138	280	138	—	—	—	—

* Da ambo i lati / On both sides / Auf beiden seiten / Tous le deux cotés

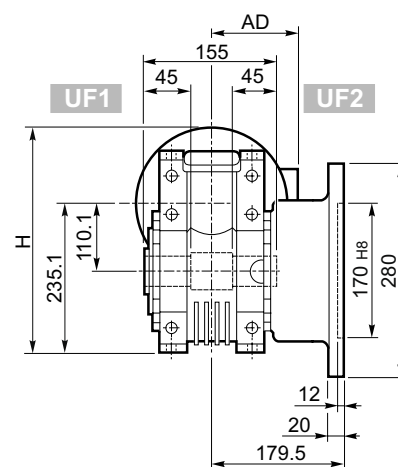
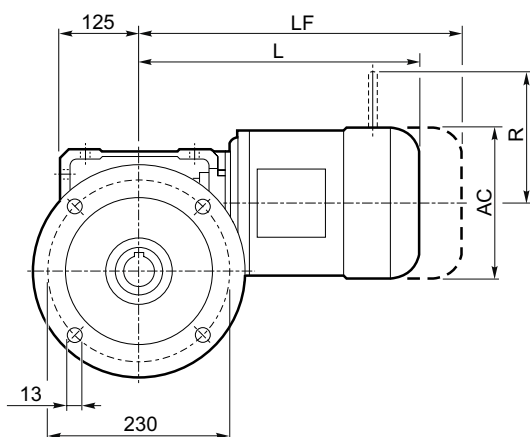


W 110□...S□

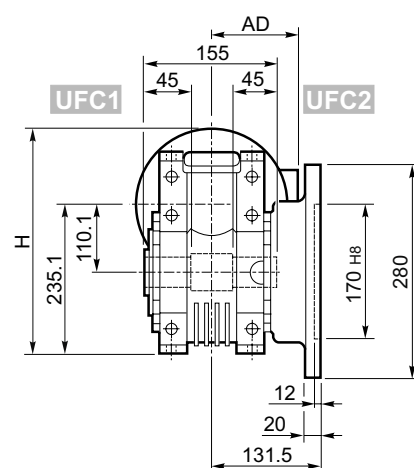
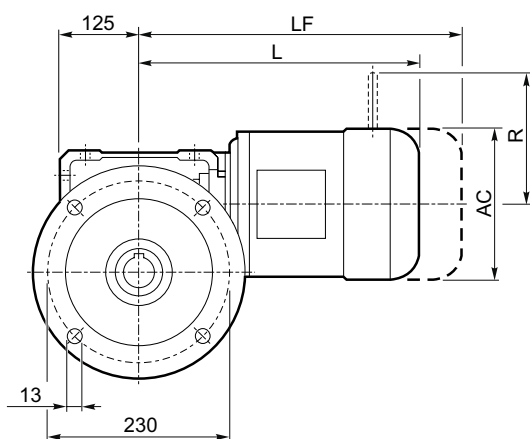
U



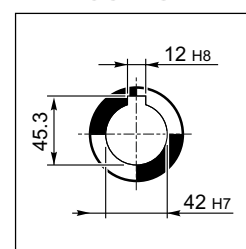
UF_



UFC_

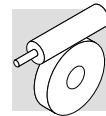


OUTPUT

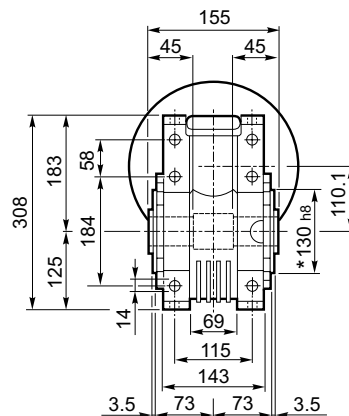
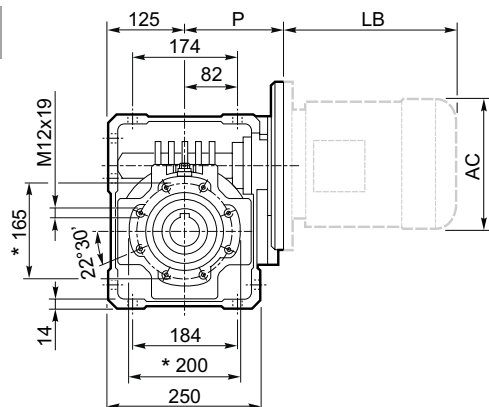


W 110													
			AC	H	L	M_	AD	M...FD	M...FA	M...FD	AD	M...FA	AD
W 110	S2	M2S	156	313	364	119	47	440	51	129	143	134	119
W 110	S3	M3S	193	332	407	142	55	503	60	160	155	160	142
W 110	S3	M3L	193	332	439	142	58	530	63	160	155	160	142

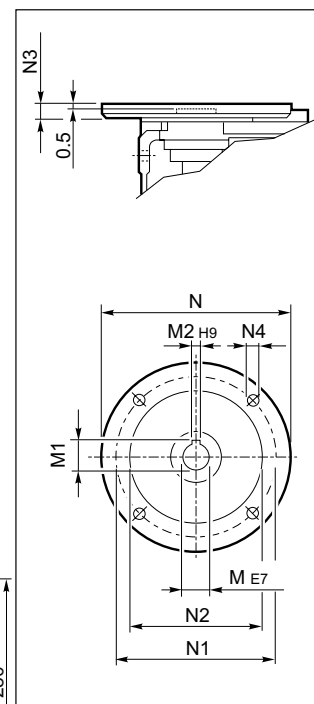
* Da ambo i lati / On both sides / Auf beiden seiten / Tous le deux cotés



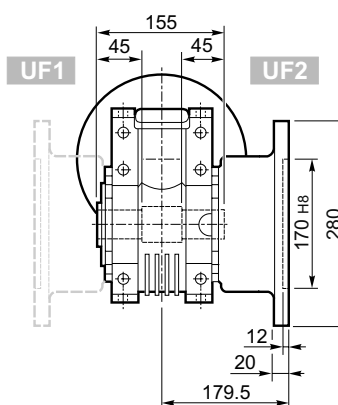
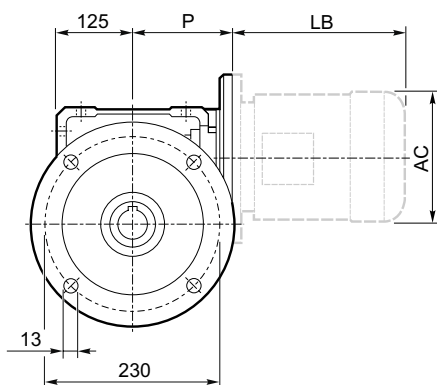
U



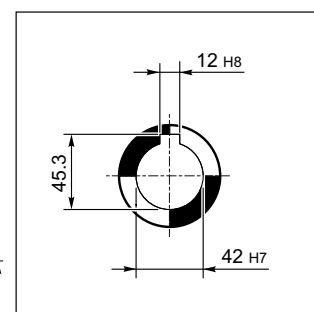
INPUT



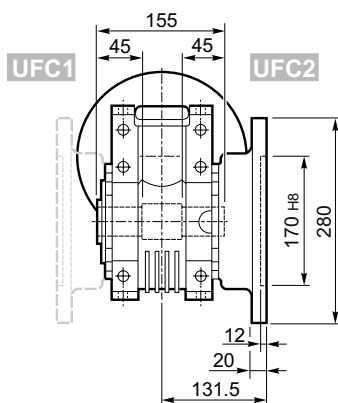
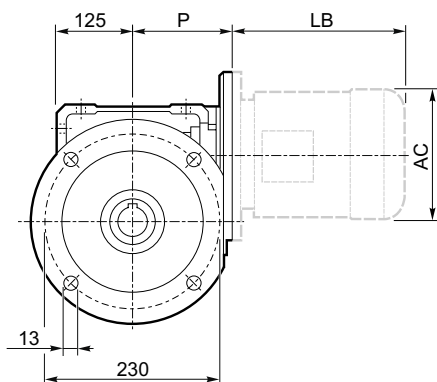
UF_



OUTPUT

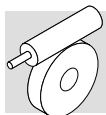


UFC_



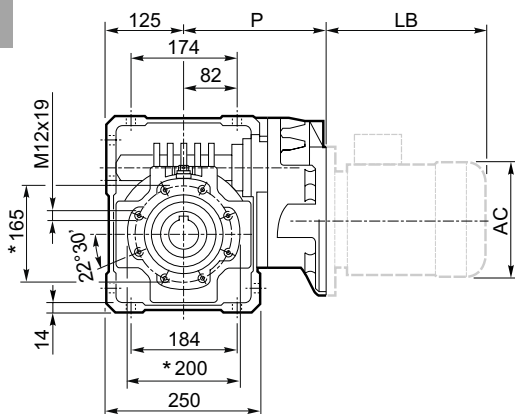
W 110_													BN		BN...FD BN...FA	
		M	M1	M2	N	N1	N2	N3	N4	P	Kg	IEC	LB	AC	LB	AC
W 110	P80 B5	19	21.8	6	200	165	130	—	M10x12	143	38	BN 80	234	156	306	156
W 110	P90 B5	24	27.3	8	200	165	130	—	M10x12	143	38	BN 90	276	176	359	176
W 110	P100 B5	28	31.3	8	250	215	180	13	13	151	39	BN 100	307	195	398	195
W 110	P112 B5	28	31.3	8	250	215	180	13	13	151	39	BN 112	325	219	424	219
W 110	P132 B5	38	41.3	10	300	265	230	16	13	226	41	BN 132	413	258	523	258
W 110	P80 B14	19	21.8	6	120	100	80	7.5	7	143	38	BN 80	234	156	306	156
W 110	P90 B14	24	27.3	8	140	115	95	6.5	9	143	38	BN 90	276	176	359	176
W 110	P100 B14	28	31.3	8	160	130	110	13	9	151	38	BN 100	307	195	398	195
W 110	P112 B14	28	31.3	8	160	130	110	13	9	151	38	BN 112	325	219	424	219

* Da ambo i lati / On both sides / Auf beiden seiten / Tous le deux cotés

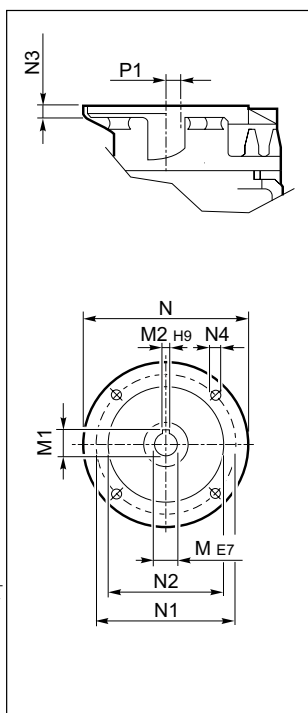


WR 110...P(IEC)

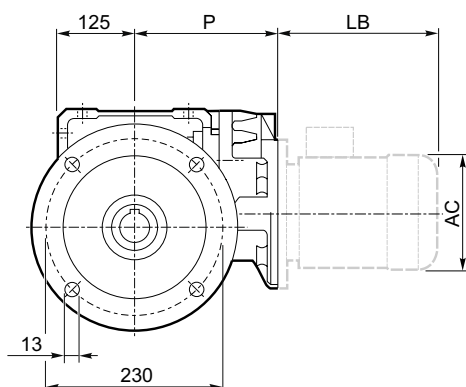
U



INPUT

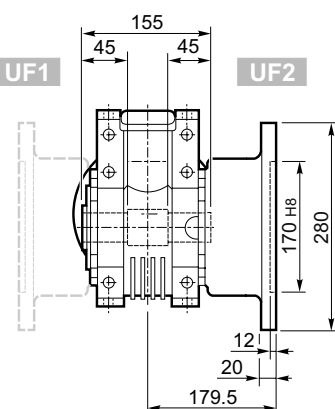


UF_

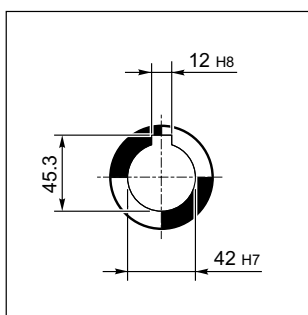


UF1

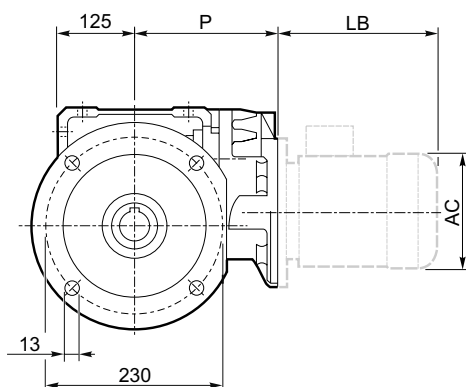
UF2



OUTPUT

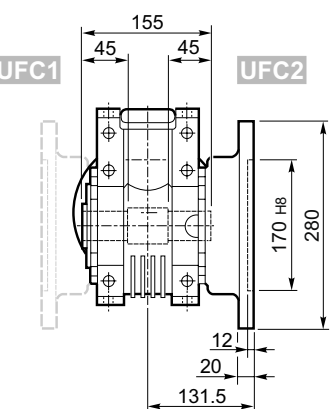


UFC_



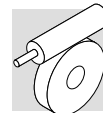
UFC1

UFC2

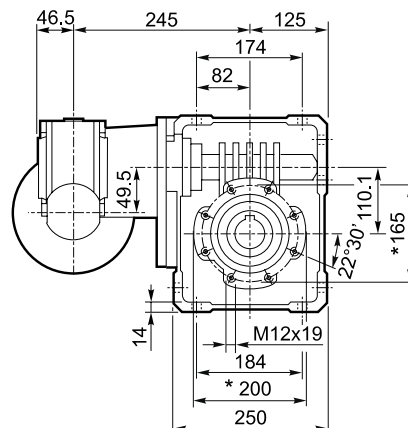
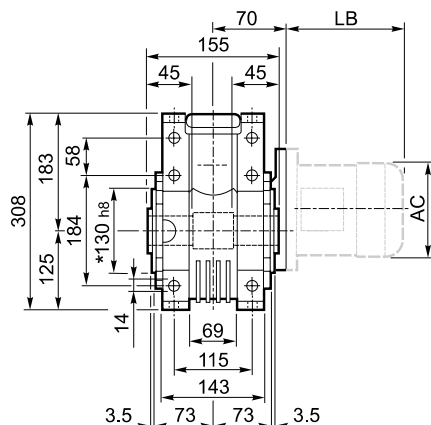


WR 110_														BN		BN...FD BN...FA	
		M	M1	M2	N	N1	N2	N3	N4	P	P1			LB	AC	LB	AC
WR 110	P71 B5	14	16.3	5	160	130	110	10	M8x14	185	58.6	44	BN 71	219	138	280	138
WR 110	P80 B5	19	21.8	6	200	165	130	14	M10x15	204	21.1	46	BN 80	234	156	306	156
WR 110	P90 B5	24	27.3	8	200	165	130	14	M10x15	204	21.1	46	BN 90	276	176	359	176
WR 110	P100 B5	28	31.3	8	250	215	180	14	M12x13	213	21.1	46	BN 100	307	195	398	195
WR 110	P112 B5	28	31.3	8	250	215	180	14	M12x13	213	21.1	48	BN 112	325	219	424	219

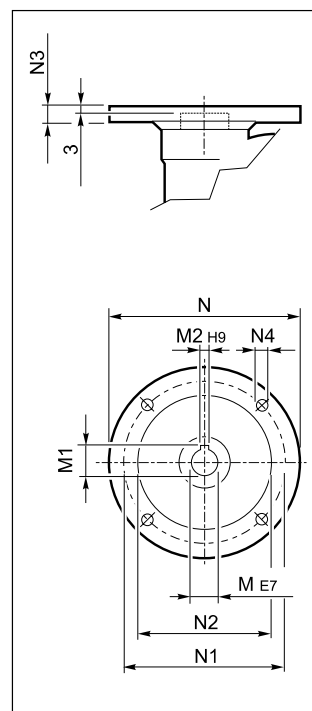
* Da ambo i lati / On both sides / Auf beiden seiten / Tous le deux cotés



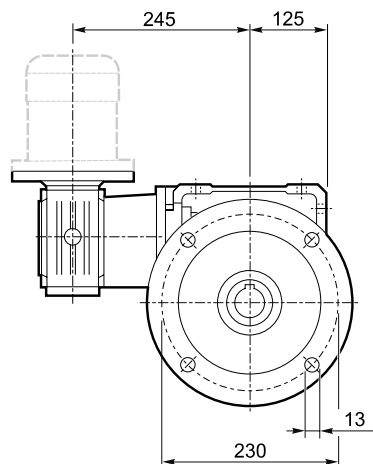
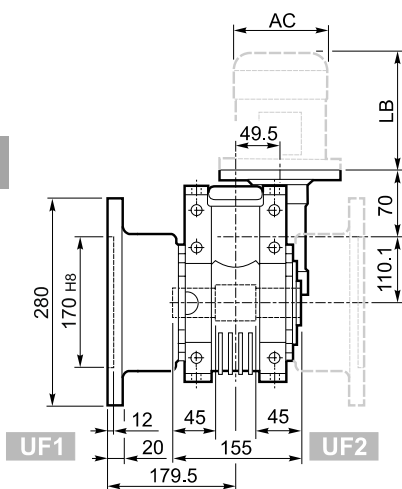
U



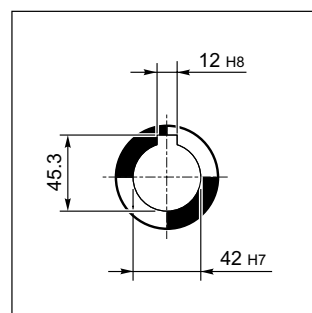
INPUT



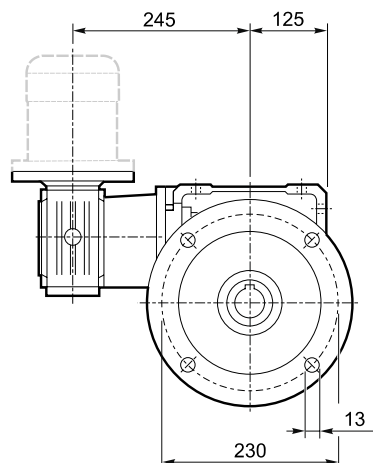
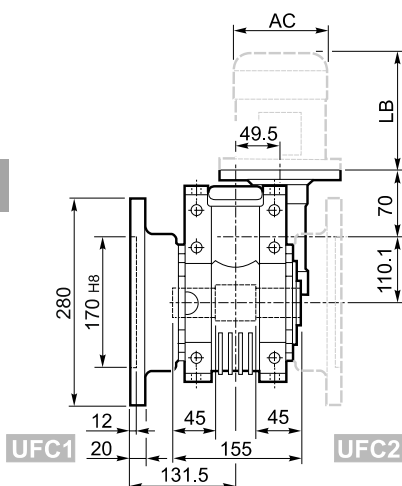
UF







OUTPUT



UFC



VF/W 49/110_												BN		BN...FD BN...FA		K		K...FC	
		M	M1	M2	N	N1	N2	N3	N4			LB	AC	LB	AC	LB	AC	LB	AC
VF/W 49/110	P63 B5	11	12.8	4	140	115	95	10.5	9.5	43	63	184	121	249	121	165	122	214	122
VF/W 49/110	P71 B5	14	16.3	5	160	130	110	10.5	9.5		71	219	138	280	138	186	139	219	139
VF/W 49/110	P80 B5	19	21.8	6	200	165	130	10	11.5		80	234	156	306	156	—	—	—	—
VF/W 49/110	P63 B14	11	12.8	4	90	75	60	7	6		63	184	121	249	121	—	—	—	—
VF/W 49/110	P71 B14	14	16.3	5	105	85	70	10.5	6.5		71	219	138	280	138	—	—	—	—
VF/W 49/110	P80 B14	19	21.8	6	120	100	80	10	7		80	234	156	306	156	—	—	—	—

* Da ambo i lati / On both sides / Auf beiden seiten / Tous le deux cotés